

OAK PARK UNIFIED SCHOOL DISTRICT

OAK PARK, CALIFORNIA

BROOKSIDE ELEMENTARY SCHOOL

BUILDING B/200 (BID AND CA)

DIRECTORY

DISTRICT

OAK PARK UNIFIED SCHOOL DISTRICT
5801 EAST CONIFER STREET
OAK PARK, CALIFORNIA 91377

SCHOOL

BROOKSIDE ELEMENTARY SCHOOL
165 NORTH SATINWOOD AVENUE
OAK PARK, CALIFORNIA 91377

ARCHITECT

KPI ARCHITECTS INC.
650 E. PARKRIDGE AVENUE, SUITE 105
CORONA, CALIFORNIA 92879-1092
PHONE: (800) 366-6381 FAX: (877) 493-2059

CONSULTANT

MECHANICAL

PBS ENGINEERS
2100 EAST ROUTE 66, SUITE 101
GLEN DORA, CALIFORNIA 91740-4623
PHONE: (626)650-0350 FAX: (626) 650-0352

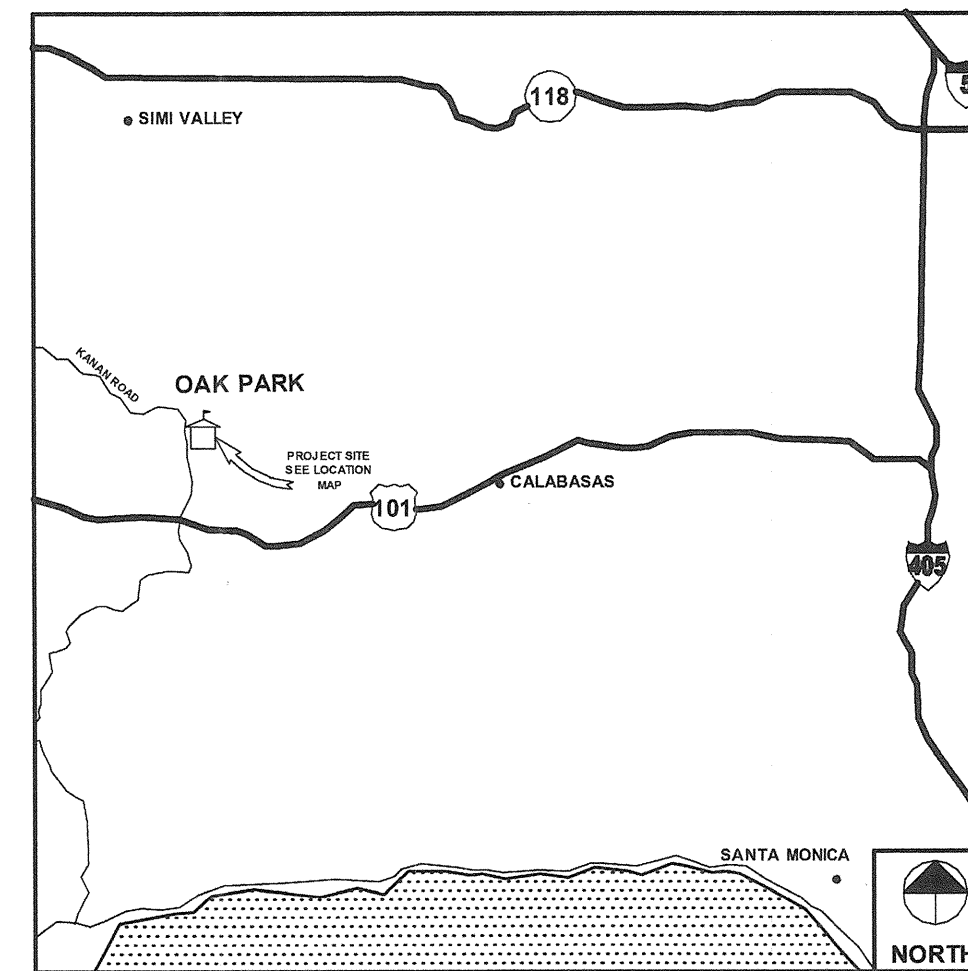
ELECTRICAL

PBS ENGINEERS
2100 EAST ROUTE 66, SUITE 101
GLEN DORA, CALIFORNIA 91740-4623
PHONE: (626)650-0350 FAX: (626) 650-0352

FIRE ALARM

PRIME DESIGN GROUP INC.
1800 GREEN HILLS ROAD, SUITE 100
SCOTTS VALLEY, CALIFORNIA 95066
PHONE: (831) 430-3600 FAX: (916) 430-9490

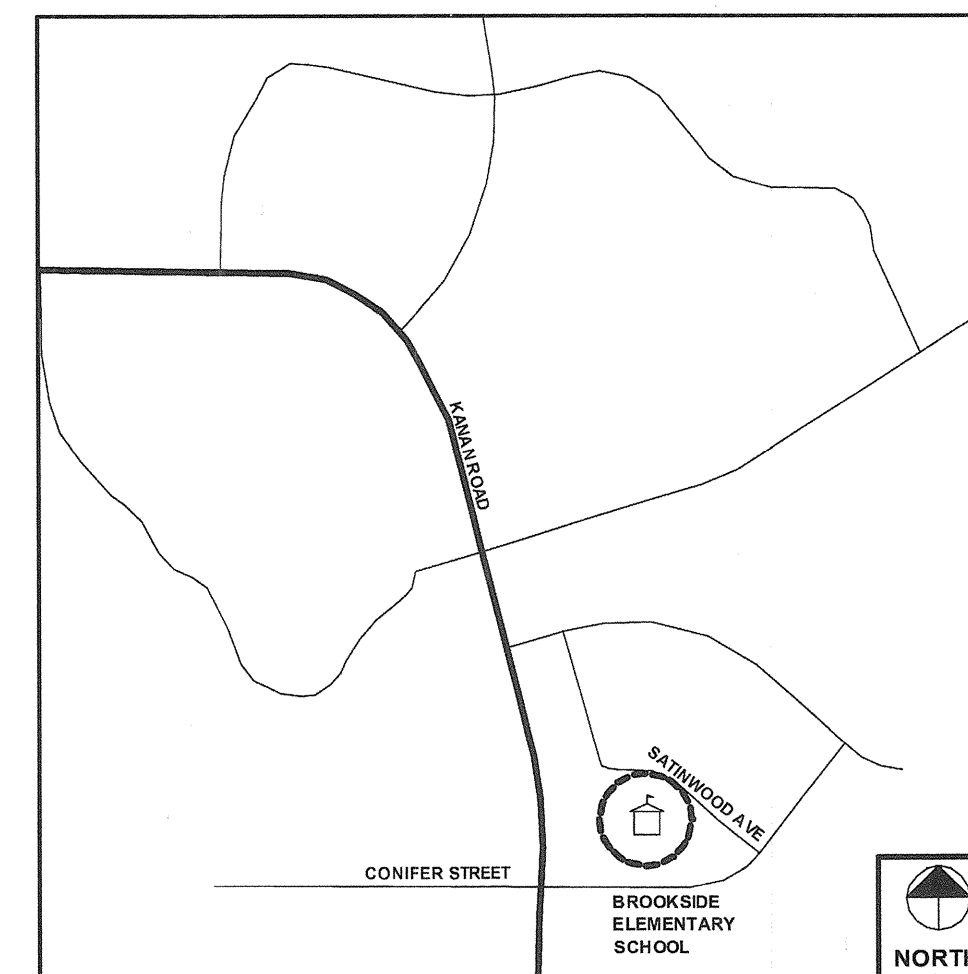
VICINITY MAP



OAK PARK, CALIFORNIA

SCALE: N.T.S.

LOCATION MAP



BROOKSIDE ELEMENTARY SCHOOL

SCALE: N.T.S.

SCOPE OF WORK

THE GENERAL SCOPE OF WORK CONSISTS OF THE FOLLOWING:

2. MODERNIZATIONS OF EXISTING BUILDING B CONSISTING OF INTERIOR WALL AND FLOOR FINISHES, RESTROOMS, WATER FREE URINALS, CASEWORK, HYDRATION STATION, CEILINGS AND LIGHTING, HVAC DUCTS, CONDENSATE LINES.
3. REPLACE INTERIOR WOOD DOORS AND HOLLOW METAL FRAMES AND CBC ACCESSIBLE HARDWARE AND THRESHOLDS.
6. REPLACE PHONE/INTERCOM/CLOCK/BELL/SECURITY SYSTEM, EMS, BUILDING B.
8. REPLACE DOOR SIGNAGE.

INDEX OF DRAWINGS

GENERAL PROJECT DATA

A0.1 TITLE SHEET
A0.2 GENERAL NOTES, ABBREVIATIONS AND SYMBOLS
A0.2a DATA SHEET
A0.2b FIRE STOP PENETRATIONS
AD1-A0.5a EGRESS REQUIREMENTS - BUILDINGS A AND B
AC.1 GENERAL ACCESSIBILITY REQUIREMENTS
AC.2 PLUMBING FIXTURES AND TOILET ACCESSORIES ACCESSIBILITY REQUIREMENTS 2

ARCHITECTURAL

AD1-D2.2 DEMOLITION FLOOR PLAN - BUILDING B
AD1-D7.2 DEMOLITION REFLECTED CEILING PLAN - BUILDING B
AD1-A2.2 FLOOR PLAN - BUILDING B
AD1-A3.2 EXTERIOR ELEVATIONS - BUILDING B
AD1-A4.60 INTERIOR WALL TYPES - WOOD STUD CONSTRUCTION
AD1-A4.61 INTERIOR WALL DETAILS
AD1-A6.2 INTERIOR ELEVATIONS - BUILDING B
A6.13 INTERIOR DETAILS
AD1-A6.60 TYPICAL INTERIOR DETAILS - WOOD STUD CONSTRUCTION
A6.61 TYPICAL INTERIOR CASEWORK DETAILS - WOOD STUD CONSTRUCTION
AD1-A6.62 TYPICAL INTERIOR DETAILS
A6.66 TYPICAL INTERIOR MOUNTING AND ANCHORAGE DETAILS - WOOD CONSTRUCTION
AD1-A7.2 REFLECTED CEILING PLAN - BUILDING B
A7.60 TYPICAL CEILING DETAILS - WOOD STUD CONSTRUCTION
AD1-A8.1 DOOR SCHEDULES AND DETAILS
AD1-A8.2 DOOR AND WINDOW DETAILS
A8.3 DETAILS
AD1-A9.1 INTERIOR FINISH SCHEDULES AND DETAILS
A10.0a BUILDING SIGNAGE DETAILS
A10.0b BUILDING SIGNAGE REQUIREMENTS

MECHANICAL

M0.1 GENERAL NOTES AND SHEET INDEX
AD1-M0.2 MECHANICAL EQUIPMENT SCHEDULE
M0.3 MECHANICAL EQUIPMENT SCHEDULE
M0.4 MECHANICAL TITLE 24 ENERGY COMPLIANCE
M0.5 MECHANICAL TITLE 24 ENERGY COMPLIANCE
M0.6 MECHANICAL TITLE 24 ENERGY COMPLIANCE
M0.7 MECHANICAL TITLE 24 ENERGY COMPLIANCE
M0.8 MECHANICAL TITLE 24 ENERGY COMPLIANCE
AD1-MD2.2 DEMOLITION FLOOR PLAN - BUILDING B
AD1-MD3.2 DEMOLITION ROOF PLAN - BUILDING B
M1.1 CAMPUS SITE PLAN
AD1-M2.2 REMODEL FLOOR PLAN - BUILDING B
AD1-M3.2 REMODEL ROOF PLAN - BUILDING B
M4.1 MECHANICAL DETAILS
AD1-M4.1a MECHANICAL DETAILS
M4.2 MECHANICAL DETAILS
M4.3 MECHANICAL DETAILS

PLUMBING

P0.1 PLUMBING NOTES LEGEND AND INDEX
AD1-P0.2 PLUMBING SCHEDULES
AD1-PD2.2 PLUMBING DEMOLITION FLOOR PLAN - BUILDING B
PD3.2 PLUMBING DEMOLITION - ROOF PLAN - BUILDING B
AD1-P2.2 PLUMBING FLOOR PLAN - BUILDING B
AD1-P2.2a PARTIAL ENLARGED PLUMBING FLOOR PLAN - BUILDING B
AD1-P3.2 PLUMBING ROOF PLAN - BUILDING B
P4.1 PLUMBING DETAILS
AD1-P4.1a PLUMBING DETAILS

ELECTRICAL

E0.1 GENERAL NOTES AND SHEET INDEX
E0.2 SYMBOLS LIST AND ABBREVIATIONS
E0.3 SINGLE LINE DIAGRAM
AD1-E0.4 LIGHTING FIXTURE AND PANEL SCHEDULES
E0.5 BUILDING B - INDOOR TITLE 24
E0.7 BUILDING C - INDOOR TITLE 24
E0.8 BUILDING C - OUTDOOR TITLE 24
ED1.1 DEMOLITION SITE PLAN
ED2.2 DEMOLITION LIGHTING FLOOR PLAN - BUILDING B
AD1-ED3.2 DEMOLITION POWER AND SIGNAL FLOOR PLAN - BUILDING B
AD1-ED4.2 DEMOLITION ROOF PLAN - BUILDING B
E1.1 REMODEL SITE PLAN
AD1-E2.2 REMODEL LIGHTING FLOOR PLAN - BUILDING B
AD1-E3.2 REMODEL POWER AND SIGNAL FLOOR PLAN - BUILDING B
AD1-E4.2 REMODEL ROOF PLAN - BUILDING B
E5.1 DETAILS

FIRE ALARM

FA0.1 FIRE ALARM TITLE SHEET
FA0.2 FIRE ALARM DETAILS
FA0.3 FIRE ALARM DETAILS
FA1.1 FIRE ALARM SITE PLAN
AD1-FA2.2a FIRE ALARM INITIATION FLOOR PLAN - BUILDING B
AD1-FA2.2b FIRE ALARM NOTIFICATION FLOOR PLAN - BUILDING B
AD1-FA3.1 PARTIAL FIRE ALARM RISER DIAGRAM
AD1-FA4.1 FIRE ALARM CALCULATIONS

8 1/2" X 11" DRAWINGS

AD1-1 INFILL FRAMING AT EXISTING OPENING
AD1-2 COVED CERAMIC TILE BASE
AD1-3 PARTIAL ROOF PLAN
AD1-4 SUSPENSION WIRE CONNECTION TO OVERHEAD STRUCTURE
AD1-5 TETHER BALL POST DETAIL
AD1-6 FLUSH VALVE DETAIL
AD1-7 ROLLING CARTS

13-01R

BID SET MODERNIZE Bldg 200 e BES

13-01R

OAK PARK UNIFIED SCHOOL DISTRICT

OAK PARK, CALIFORNIA

BROOKSIDE ELEMENTARY SCHOOL

MODERNIZATION

DIRECTORY

DISTRICT

OAK PARK UNIFIED SCHOOL DISTRICT
5801 EAST CONIFER STREET
OAK PARK, CALIFORNIA 91377

SCHOOL

BROOKSIDE ELEMENTARY SCHOOL
165 NORTH SATINWOOD AVENUE
OAK PARK, CALIFORNIA 91377

ARCHITECT

KPI ARCHITECTS INC.
650 E. PARKRIDGE AVENUE, SUITE 105
CORONA, CALIFORNIA 92879-1092
PHONE: (800) 366-6381 FAX: (877) 493-2059

CONSULTANT

MECHANICAL

PBS ENGINEERS
2100 EAST ROUTE 66, SUITE 101
GLENORA, CALIFORNIA 91740-4623
PHONE: (626)650-0350 FAX: (626) 650-0352

ELECTRICAL

PBS ENGINEERS
2100 EAST ROUTE 66, SUITE 101
GLENORA, CALIFORNIA 91740-4623
PHONE: (626)650-0350 FAX: (626) 650-0352

FIRE ALARM

PRIME DESIGN GROUP INC.
1800 GREEN HILLS ROAD, SUITE 100
SCOTTS VALLEY, CALIFORNIA 95066
PHONE: (831) 430-3600 FAX: (916) 430-9490

DEFERRED APPROVAL ITEMS

1. NONE.

PRIMARY APPLICABLE CODES

THE CONSTRUCTION OF THIS PROJECT SHALL CONFORM TO THE REQUIREMENTS OF:

- TITLE 19 CCR, PUBLIC SAFETY, STATE FIRE MARSHAL REGULATIONS
- TITLE 24 CCR, PART 1 - 2007 BUILDING STANDARDS ADMINISTRATIVE CODE
- TITLE 24 CCR, PART 2 - 2007 CALIFORNIA BUILDING CODE, VOL. 1 & 2 (CBC) (2006 IBC, AS AMENDED BY CA)
- TITLE 24 CCR, PART 3 - 2007 CALIFORNIA ELECTRIC CODE, VOL. 1 & 2 (CEC) (2005 NEC, AS AMENDED BY CA)
- TITLE 24 CCR, PART 4 - 2007 CALIFORNIA MECHANICAL CODE, VOL. 1 & 2 (CMC) (2006 IAPMO UMC, AS AMENDED BY CA)
- TITLE 24 CCR, PART 5 - 2007 CALIFORNIA MECHANICAL CODE, VOL. 1 & 2 (CMC) (2006 IAPMO UMC, AS AMENDED BY CA)
- TITLE 24 CCR, PART 6 - 2008 CALIFORNIA ENERGY CODE
- TITLE 24 CCR, PART 7 - 2007 CALIFORNIA ELEVATOR SAFETY CONSTRUCTION CODE
- TITLE 24 CCR, PART 8 - 2007 CALIFORNIA HISTORICAL BUILDING CODE
- TITLE 24 CCR, PART 9 - 2007 CALIFORNIA FIRE CODE (CFC) (2006 IFC, AS AMENDED BY CA)
- TITLE 24 CCR, PART 10 - 2007 EXISTING BUILDING CODE
- TITLE 24 CCR, PART 12 - 2007 CALIFORNIA REFERENCED STANDARDS (PARTIAL LIST - SEE CBC CH. 35 AND CFC CH. 45)
- 2002 NFPA 13, INSTALLATION OF SPRINKLER SYSTEMS (CA AMENDED)
- 2007 NFPA 14, INSTALLATION OF STANDPIPE AND HOSE SYSTEMS
- 2002 NFPA 17, DRY CHEMICAL EXTINGUISHING SYSTEMS
- 2002 NFPA 17A, WET CHEMICAL EXTINGUISHING SYSTEMS
- 2003 NFPA 20, INSTALLATION OF STATIONARY PUMPS FOR FIRE PROTECTION
- 2003 NFPA 22, WATER TANKS FOR PRIVATE FIRE PROTECTION
- 2007 NFPA 24, INSTALLATION OF PRIVATE FIRE PROTECTION
- 2006 NFPA 25, INSPECTION, TESTING, MAINTENANCE OF WATER-BASED FIRE PROTECTION SYSTEMS (CA AMENDED)
- 2007 NFPA 27, NATIONAL FIRE ALARM CODE (CA AMENDED); SEE UL STD 1971 FOR "VISUAL DEVICES"
- 2002 ICC 300, BLEACHERS, FOLDING AND TELESCOPIC SEATING AND GRANDSTANDS (ICC/ANSI 300-2002)

CHANGES TO THE APPROVED DRAWINGS AND SPECIFICATIONS

CHANGES TO THE APPROVED DRAWINGS AND SPECIFICATIONS SHALL BE MADE BY AN ADDENDUM OR A CHANGE ORDER APPROVED BY THE DIVISION OF THE STATE ARCHITECT, AS REQUIRED BY SECTION 4-336, PART 1, TITLE 24, CCR.

PROJECT INSPECTION

A CLASS I PROJECT INSPECTOR EMPLOYED BY THE DISTRICT (OWNER) AND APPROVED BY THE DIVISION OF THE STATE ARCHITECT SHALL PROVIDE CONTINUOUS INSPECTION OF THE WORK. THE DUTIES OF THE INSPECTOR ARE DEFINED IN SECTION 4-342, PART 1, TITLE 24, CCR.

DSA APPROVAL CLAUSE (PART 1, TITLE 24, C.C.R., SECTION 4-317(c))

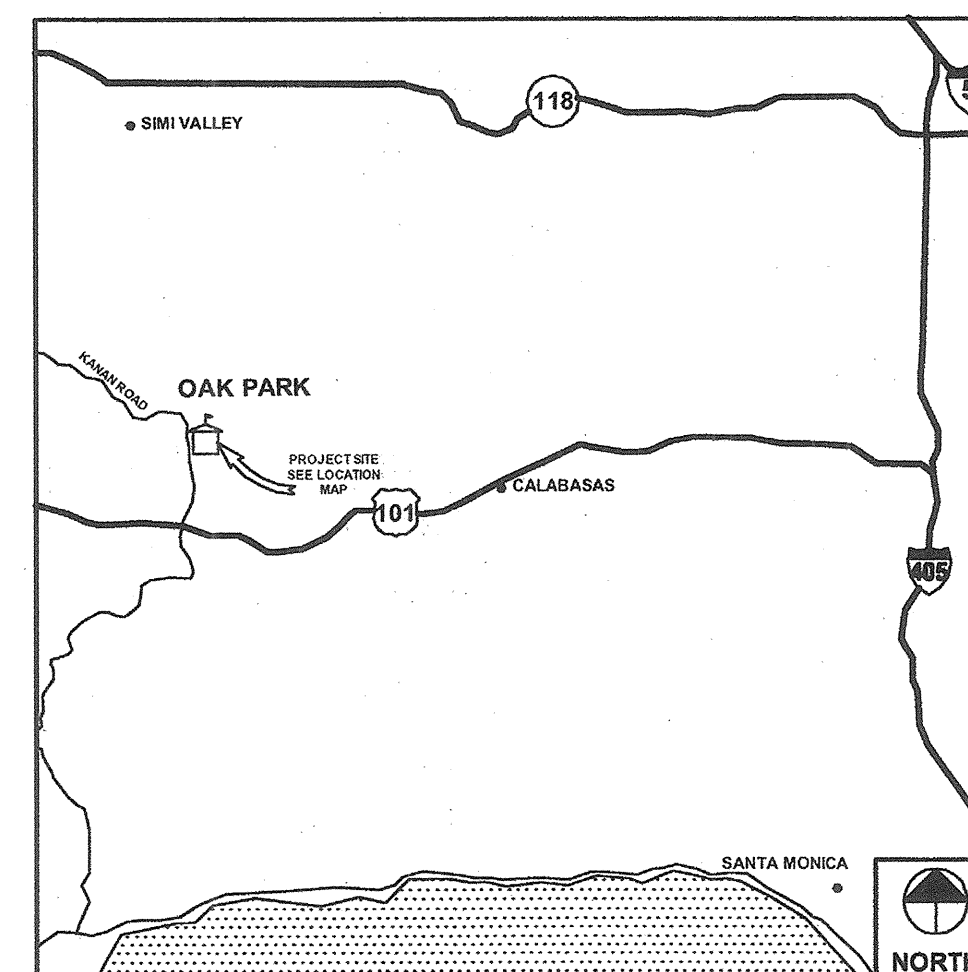
"THE INTENT OF THESE DRAWINGS AND SPECIFICATIONS IS THAT THE WORK OF THE ALTERATION, REHABILITATION OR RECONSTRUCTION IS TO BE IN ACCORDANCE WITH TITLE 24, CALIFORNIA CODE OF REGULATIONS. SHOULD ANY EXISTING CONDITIONS SUCH AS DETERIORATION OR NON-COMPLYING CONSTRUCTION BE DISCOVERED WHICH IS NOT COVERED BY THE CONTRACT DOCUMENTS WHEREIN THE FINISHED WORK WILL NOT COMPLY WITH TITLE 24, CALIFORNIA CODE OF REGULATIONS, A CHANGE ORDER, OR A SEPARATE SET OF PLANS AND SPECIFICATIONS, DETAILING AND SPECIFYING THE REQUIRED REPAIR WORK SHALL BE SUBMITTED TO AND APPROVED BY DSA BEFORE PROCEEDING WITH THE REPAIR WORK."

CODE ANALYSIS

BUILDING GROUP	OCCUPANCY CLASS	NO. OF STORIES	TYPE OF CONSTRUCTION	ALLOWABLE SQ. FOOTAGE PER TABLE 903	ACTUAL SQ. FOOTAGE	INCREASED ALLOWABLE SQ. FOOTAGE
BUILDING A	A-3/E	1	VA	11,500	12,690	13,201
BUILDING B						
FIRE AREA #1	E	1	VB	9,500	7,800	-
FIRE AREA #2	E	1	VB	9,500	7,800	-
BUILDING C						
FIRE AREA #1	E	1	VB	9,500	7,800	-
FIRE AREA #2	E	1	VB	9,500	7,800	-
BUILDING D	B	1	VB	9,000	4,100	-
BUILDING R1	E	1	VB	9,500	2,852	-
BUILDING R2	E	1	VB	9,500	2,280	-
BUILDING R3	E	1	VB	9,500	4,560	-

- ACTUAL SQ. FOOTAGE INCLUDES OVERHEAD PROJECTIONS
- REFER TO A0.5a FOR INCREASED ALLOWABLE SQ. FOOTAGE CALCULATIONS

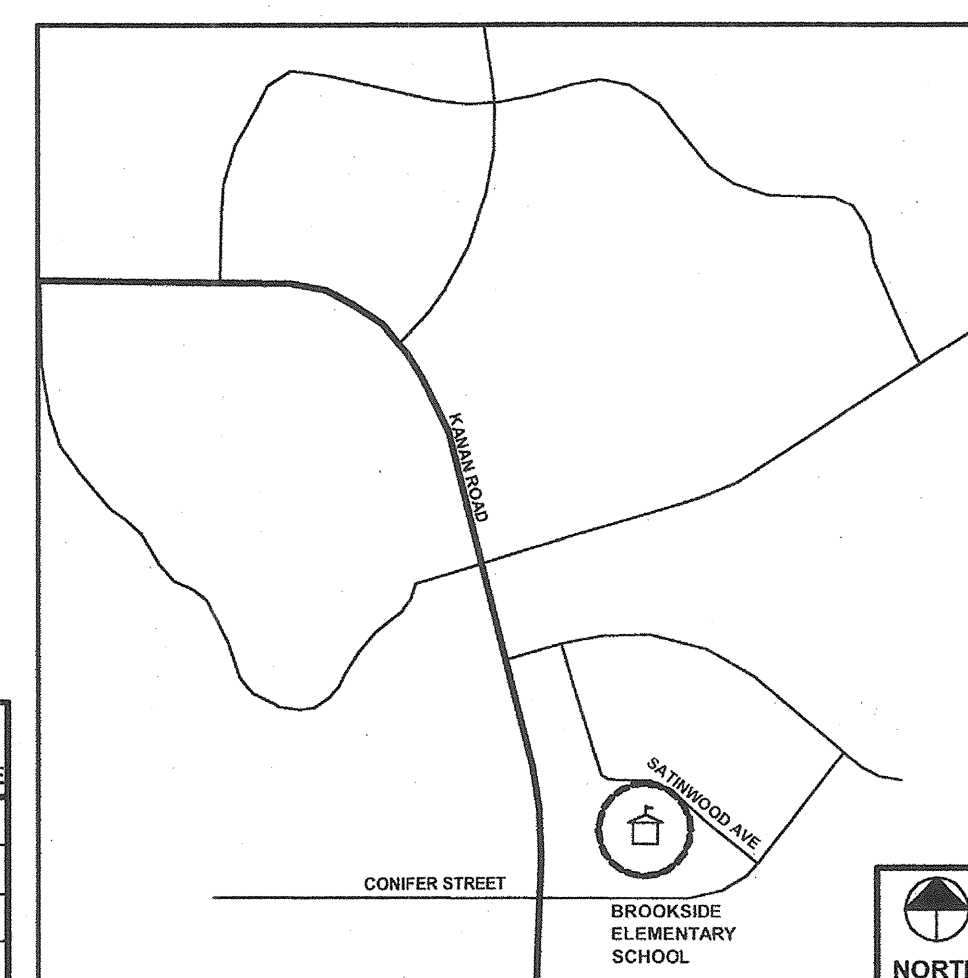
VICINITY MAP



OAK PARK, CALIFORNIA

SCALE: N.T.S.

LOCATION MAP



BROOKSIDE ELEMENTARY SCHOOL

SCALE: N.T.S.

SCOPE OF WORK

THE GENERAL SCOPE OF WORK CONSISTS OF THE FOLLOWING:

1. SITE MODIFICATIONS AND ADDITIONS GENERALLY CONSISTING OF ACCESSIBLE PARKING, CONCRETE SIDEWALKS AND PAVING, SEAL/COAT AND RE-STRIPPE ASPHALT PAVEMENT.
2. MODERNIZATIONS OF EXISTING BUILDINGS A, B, AND C CONSISTING OF INTERIOR WALL AND FLOOR FINISHES, RESTROOMS, CASEWORK, DRINKING FOUNTAINS, CEILING AND LIGHTING.
3. REPLACE/UPDATE DOOR AND WINDOW FRAMES, ADD CBC ACCESSIBLE DOOR HARDWARE AND THRESHOLDS AND LANDINGS AT BUILDINGS ADMINISTRATION, A, B, C AND D.
4. EXTERIOR WALLS TO BE CLEANED AND PAINTED FOR ALL BUILDINGS.
5. REPLACE EXISTING FIRE ALARM WITH NEW AUTOMATIC FIRE ALARM SYSTEM, BUILDINGS A, B, C, D AND FOUR RELOCATABLES.
6. REPLACE PHONE/INTERCOM/CLOCK/BELL/SECURITY SYSTEM, EMS, BUILDINGS A, B, C, D AND RELOCATABLES.
7. REPLACE ROOF AT BUILDINGS A, B, C, D AND THREE RELOCATABLE BUILDINGS.
8. REPLACE DOOR SIGNAGE.

INDEX OF DRAWINGS

GENERAL PROJECT DATA

- A0.1 TITLE SHEET
- A0.2 GENERAL NOTES, ABBREVIATIONS AND SYMBOLS
- A0.2a DATA SHEET
- A0.2b FIRE STOP PENETRATIONS
- A0.4 FIRE DEPARTMENT REQUIREMENTS - VENTURA COUNTY
- A0.5a EGRESS REQUIREMENTS - BUILDINGS A AND B
- A0.5b EGRESS REQUIREMENTS - BUILDINGS C, D, R1, R2 AND R3
- AC.1 GENERAL ACCESSIBILITY REQUIREMENTS
- AC.2 ACCESSIBILITY REQUIREMENTS 2

ARCHITECTURAL

- D2.1 DEMOLITION FLOOR PLAN - BUILDING A
- D2.2 DEMOLITION FLOOR PLAN - BUILDING B
- D2.3 DEMOLITION FLOOR PLAN - BUILDING C
- D2.4 DEMOLITION FLOOR PLAN - BUILDING D
- D2.5 DEMOLITION FLOOR PLANS - BUILDINGS R1, R2 AND R3
- D7.1 DEMOLITION EXISTING CEILING PLAN - BUILDING A
- D7.2 DEMOLITION REFLECTED CEILING PLAN - BUILDING B
- D7.3 DEMOLITION REFLECTED CEILING PLAN - BUILDING C
- A1.1 CAMPUS SITE PLAN
- A1.3 SITE DETAILS
- A1.10 SITE DETAILS - PAVEMENT MARKINGS AND MARKING AREAS
- A1.10a SITE DETAILS - HARD COURT GAME STRIPING LAYOUTS
- A1.10f SITE DETAILS - ACCESSIBLE PASSENGER DROP-OFF
- A1.20 SITE SIGNAGE DETAILS
- A2.1 FLOOR PLAN - BUILDING A
- A2.2 FLOOR PLAN - BUILDING B
- A2.3 FLOOR PLAN - BUILDING C
- A2.4 FLOOR PLAN - BUILDING D
- A2.5 FLOOR PLANS - BUILDINGS R1, R2 AND R3
- A3.1 EXTERIOR ELEVATIONS - BUILDING A
- A3.2 EXTERIOR ELEVATIONS - BUILDING B
- A3.3 EXTERIOR ELEVATIONS - BUILDING C
- A3.4 EXTERIOR ELEVATIONS - BUILDING D
- A3.5 EXTERIOR ELEVATIONS - BUILDINGS R1, R2, AND R3
- A4.80 INTERIOR WALL TYPES - WOOD STUD CONSTRUCTION
- A4.61 INTERIOR WALL DETAILS
- A5.1 ROOF PLAN - BUILDING A
- A5.2 ROOF PLAN - BUILDING B
- A5.3 ROOF PLAN - BUILDING C
- A5.4 ROOF PLAN - BUILDING D
- A5.5 ROOF PLANS - BUILDINGS R1, R2 AND R3
- A6.1 INTERIOR ELEVATIONS - BUILDING A
- A6.2 INTERIOR ELEVATIONS - BUILDING B
- A6.3 INTERIOR ELEVATIONS - BUILDING C
- A6.13 INTERIOR DETAILS
- A6.60 TYPICAL INTERIOR DETAILS - WOOD STUD CONSTRUCTION
- A6.61 TYPICAL INTERIOR CASEWORK DETAILS - WOOD STUD CONSTRUCTION
- A6.62 TYPICAL INTERIOR MOUNTING AND ANCHORAGE DETAILS - WOOD CONSTRUCTION
- A7.1 REFLECTED CEILING PLAN - BUILDING A
- A7.2 REFLECTED CEILING PLAN - BUILDING B
- A7.3 REFLECTED CEILING PLAN - BUILDING C
- A7.60 TYPICAL CEILING DETAILS - WOOD STUD CONSTRUCTION
- A8.1 DOOR SCHEDULES AND DETAILS
- A8.2 DOOR AND WINDOW DETAILS
- A8.3 DETAILS
- A9.1 INTERIOR FINISH SCHEDULES AND DETAILS
- A10.0a BUILDING SIGNAGE DETAILS
- A10.0b BUILDING SIGNAGE REQUIREMENTS

MECHANICAL

- M0.1 GENERAL NOTES AND SHEET INDEX
- M0.2 MECHANICAL EQUIPMENT SCHEDULE
- M0.3 MECHANICAL EQUIPMENT SCHEDULE
- M0.4 MECHANICAL TITLE 24 ENERGY COMPLIANCE
- M0.5 MECHANICAL TITLE 24 ENERGY COMPLIANCE
- M0.6 MECHANICAL TITLE 24 ENERGY COMPLIANCE
- M0.8 MECHANICAL TITLE 24 ENERGY COMPLIANCE
- MD2.1 DEMOLITION FLOOR PLAN - BUILDING A
- MD2.2 DEMOLITION FLOOR PLAN - BUILDING B
- MD2.3 DEMOLITION FLOOR PLAN - BUILDING C
- MD2.4 DEMOLITION FLOOR PLAN - BUILDING D
- MD2.5 DEMOLITION FLOOR PLANS - BUILDINGS R1, R2 AND R3
- MD3.1 DEMOLITION ROOF PLAN - BUILDING A
- MD3.2 DEMOLITION ROOF PLAN - BUILDING B
- MD3.3 DEMOLITION ROOF PLAN - BUILDING C
- MD3.4 DEMOLITION ROOF PLAN - BUILDING D
- M1.1 CAMPUS SITE PLAN
- M2.1 REMODEL FLOOR PLAN - BUILDING A
- M2.2 REMODEL FLOOR PLAN - BUILDING B
- M2.3 REMODEL FLOOR PLAN - BUILDING C
- M2.4 REMODEL FLOOR PLAN - BUILDING D
- M2.5 REMODEL FLOOR PLANS - BUILDINGS R1, R2 AND R3
- M3.1 REMODEL ROOF PLAN - BUILDING A
- M3.2 REMODEL ROOF PLAN - BUILDING B
- M3.3 REMODEL ROOF PLAN - BUILDING C
- M3.4 REMODEL ROOF PLAN - BUILDING D
- M4.1 MECHANICAL DETAILS
- M4.2 MECHANICAL DETAILS
- M4.3 MECHANICAL DETAILS

PLUMBING

- P0.1 PLUMBING NOTES LEGEND AND INDEX
- P0.2 PLUMBING SCHEDULES
- PD2.1 PLUMBING DEMOLITION FLOOR PLAN - BUILDING A
- PD2.2 PLUMBING DEMOLITION FLOOR PLAN - BUILDING B
- PD2.3 PLUMBING DEMOLITION FLOOR PLAN - BUILDING C
- PD2.4 PLUMBING DEMOLITION FLOOR PLAN - BUILDING D
- PD2.5 DEMOLITION FLOOR PLAN - BUILDINGS R1, R2 AND R3
- PD3.1 PLUMBING DEMOLITION ROOF PLAN - BUILDING A
- PD3.2 PLUMBING DEMOLITION ROOF PLAN - BUILDING B
- PD3.3 PLUMBING DEMOLITION ROOF PLAN - BUILDING C
- PD3.4 PLUMBING DEMOLITION ROOF PLAN - BUILDING D
- P2.1 PLUMBING FLOOR PLAN - BUILDING A
- P2.2 PLUMBING FLOOR PLAN - BUILDING B
- P2.3 PLUMBING FLOOR PLAN - BUILDING C
- P2.4 PLUMBING FLOOR PLAN - BUILDING D
- P2.5 PLUMBING FLOOR PLANS - BUILDINGS R1, R2 AND R3
- P3.1 PLUMBING ROOF PLAN - BUILDING A
- P3.2 PLUMBING ROOF PLAN - BUILDING B
- P3.3 PLUMBING ROOF PLAN - BUILDING C
- P3.4 PLUMBING ROOF PLAN - BUILDING D
- P4.1 PLUMBING DETAILS

ELECTRICAL

- E0.1 GENERAL NOTES AND SHEET INDEX
- E0.2 SYMBOLS LIST AND ABBREVIATIONS
- E0.3 LIGHTING FIXTURE AND PANEL SCHEDULES
- E0.4 BUILDING B - INDOOR TITLE 24
- E0.7 BUILDING C - INDOOR TITLE 24
- E0.8 BUILDING C - OUTDOOR TITLE 24
- ED1.1 DEMOLITION SITE PLAN
- ED2.1 DEMOLITION LIGHTING FLOOR PLAN - BUILDING A
- ED2.2 DEMOLITION LIGHTING FLOOR PLAN - BUILDING B
- ED2.3 DEMOLITION LIGHTING FLOOR PLAN - BUILDING C
- ED3.1 DEMOLITION POWER AND SIGNAL FLOOR PLAN - BUILDING A
- ED3.2 DEMOLITION POWER AND SIGNAL FLOOR PLAN - BUILDING B
- ED3.3 DEMOLITION POWER AND SIGNAL FLOOR PLAN - BUILDING C
- ED3.4 DEMOLITION POWER AND SIGNAL FLOOR PLAN - BUILDING D
- ED3.5 DEMOLITION POWER AND SIGNAL FLOOR PLANS - BUILDINGS R1, R2 AND R3
- ED4.1 DEMOLITION ROOF PLAN - BUILDING A
- ED4.2 DEMOLITION ROOF PLAN - BUILDING B
- ED4.3 DEMOLITION ROOF PLAN - BUILDING D
- E1.1 REMODEL SITE PLAN
- E1.2 REMODEL LIGHTING FLOOR PLAN - BUILDING A
- E1.3 REMODEL LIGHTING FLOOR PLAN - BUILDING B
- E1.4 REMODEL LIGHTING FLOOR PLAN - BUILDING C
- E3.1 REMODEL POWER AND SIGNAL FLOOR PLAN - BUILDING A
- E3.2 REMODEL POWER AND SIGNAL FLOOR PLAN - BUILDING B
- E3.3 REMODEL POWER AND SIGNAL FLOOR PLAN - BUILDING C
- E3.4 REMODEL POWER AND SIGNAL FLOOR PLAN - BUILDING D
- E3.5 REMODEL POWER AND SIGNAL FLOOR PLANS - BUILDINGS R1, R2 AND R3
- E4.1 REMODEL ROOF PLAN - BUILDING A
- E4.2 REMODEL ROOF PLAN - BUILDING B
- E4.3 REMODEL ROOF PLAN - BUILDING D
- E5.1 DETAILS

FIRE ALARM

- FA0.1 FIRE ALARM TITLE SHEET
- FA0.2 FIRE ALARM DETAILS
- FA0.3 FIRE ALARM DETAILS
- FA1.1 FIRE ALARM SITE PLAN
- FA2.1a FIRE ALARM INITIATION FLOOR PLAN - BUILDING A
- FA2.1b FIRE ALARM INITIATION FLOOR PLAN - BUILDING B
- FA2.2a FIRE ALARM INITIATION FLOOR PLAN - BUILDING B
- FA2.2b FIRE ALARM INITIATION FLOOR PLAN - BUILDING B
- FA2.3a FIRE ALARM INITIATION FLOOR PLAN - BUILDING C
- FA2.3b FIRE ALARM INITIATION FLOOR PLAN - BUILDING C
- FA2.4 FIRE ALARM FLOOR PLANS - BUILDINGS D, R1, R2 AND R3
- FA3.1 PARTIAL FIRE ALARM RISER DIAGRAM
- FA3.2 PARTIAL FIRE ALARM RISER DIAGRAM
- FA3.3 PARTIAL FIRE ALARM RISER DIAGRAM
- FA4.1 FIRE ALARM CALCULATIONS

PROJECT NO.: 234800 DATE: 09-02-09

TITLE SHEET

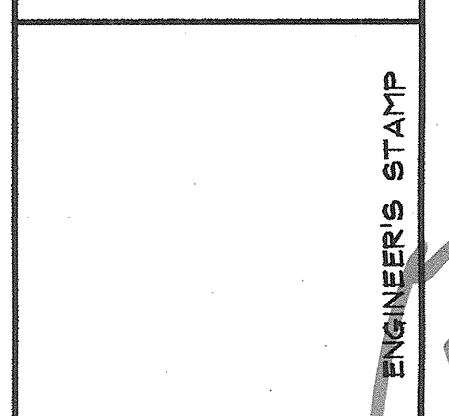
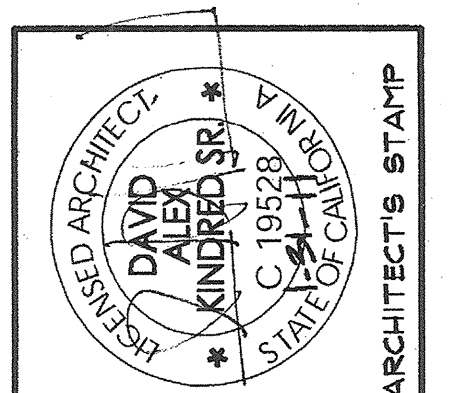
13-02R

A0.1

IDENTIFICATION STAMP
DIV. OF THE STATE ARCHITECT
APPL 03-113415

ACK: FLS: ss: ll
DATE: 10/20/10

DSA STAMP



OAK PARK UNIFIED SCHOOL DISTRICT
BROOKSIDE ELEMENTARY SCHOOL
MODERNIZATION

KPI Architects Inc.
650 East Parkridge Avenue, Suite 105
Corona, California 92879-1092
Phone: (800) 366-6381 Fax: (877) 493-2059

barnhart, inc.
A BERRY INTERNATIONAL COMPANY

MODERNIZE BLDG 200 C BES 13-02R

DEMOLITION GENERAL NOTES:

- COMPLY WITH ALL GOVERNING REGULATIONS FOR CONTROL OF DUST AND FOR DISPOSAL OF DEMOLITION MATERIALS.
- PROVIDE ALL DEMOLITION REQUIRED FOR NEW CONSTRUCTION, ALTERATIONS, AND/OR RECONSTRUCTION WORK WHETHER OR NOT DEMOLITION WORK IS SHOWN AND/OR CALLED OUT.
- EXISTING CONDITIONS SUCH AS CABINETS, ELECTRICAL FIXTURES, FURNISHINGS, EQUIPMENT AND FINISHES MAY NOT BE ACCOUNTED FOR OR CORRECTLY SHOWN ON THE DRAWINGS. THE CONTRACTOR SHALL BE RESPONSIBLE FOR VERIFYING ALL EXISTING CONDITIONS PRIOR TO BID.
- PRIOR TO CONSTRUCTION, THE SCHOOL DISTRICT WILL REMOVE ALL FREE STANDING ITEMS WHICH ARE TO BE RETAINED FROM THE AREAS WITHIN THE SCOPE OF WORK. THE CONTRACTOR SHALL CONSULT WITH THE SCHOOL DISTRICT'S REPRESENTATIVE AS TO THE DISPOSITION OF OTHER ITEMS REQUIRING REMOVAL. ALL SUCH ITEMS ARE TO BE REMOVED FROM THE SITE ONLY AFTER APPROVAL BY THE SCHOOL DISTRICT.
- REMOVE ALL EXISTING EQUIPMENT AND ACCESSORIES SUCH AS, BUT NOT LIMITED TO MARKERBOARDS, TACK BOARDS, TELEVISION BRACKETS, PENCIL SHARPENERS, PAPER TOWEL DISPENSERS, WINDOW COVERINGS, SOAP DISPENSERS, AND FIRE EXTINGUISHERS AS MAY BE NECESSARY FOR ALTERATION/RECONSTRUCTION WORK, U.O.N.
- REFER TO ARCHITECTURAL, MECHANICAL, PLUMBING, AND ELECTRICAL DRAWINGS AND SPECIFICATIONS FOR DEMOLITION INSTRUCTIONS AND REQUIREMENTS INCLUDING THE DOOR AND INTERIOR FINISH SCHEDULES.
- REMOVE ANY AND ALL EXISTING CARPET, VINYL, ASBESTOS TILE, VINYL COMPOSITION TILE, SHEET VINYL FLOORING, CERAMIC TILE AND QUARRY TILE AT ROOMS AND AREAS RECEIVING NEW FLOORING U.O.N. RE: ROOM FINISH SCHEDULE.
- REMOVE ALL EXISTING WALL TILE, BASE, TRIM AND/OR OTHER FINISHES WHICH WOULD INTERFERE WITH THE INSTALLATION OF NEW/REPLACEMENT WALL FINISHES.
- REMOVE ALL ABANDONED CONDUIT, WIRING, DEVICES, HVAC EQUIPMENT, DUCTWORK AND RELATED SUPPORT STRIPS, HANGERS AND WIRING.
- CONTRACTOR TO PROVIDE STORAGE CONTAINERS TO STORE ITEMS FOR REINSTALLATION.
- ALL ABANDONED UTILITY LINES SHALL BE CAPPED AT LEAST 1" BELOW ANY FINISHED SURFACE. PATCH AND REPAIR TO MATCH ADJACENT SURFACES AND SURFACE TYPES.
- CONTRACTOR SHALL REMOVE ALL ABANDONED UNDERGROUND CONDUIT, WIRING, PIPES, CONCRETE FOOTINGS FROM ITEMS SCHEDULED FOR REMOVAL.

EXISTING STRUCTURAL MEMBERS

UNLESS SPECIFICALLY SHOWN ON THESE DRAWINGS NO STRUCTURAL MEMBER SHALL BE CUT, DRILLED OR NOTCHED WITHOUT PRIOR WRITTEN AUTHORIZATION FROM THE STRUCTURAL ENGINEER AND THE DISTRICT STRUCTURAL ENGINEER FROM THE DSA.

FLAME SPREAD & SMOKE DENSITY RATINGS

NOTE: NOT ALL MATERIALS USED ON THIS PROJECT.

MATERIAL	FLAME SPREAD (MAXIMUM)	SMOKE DENSITY (MINIMUM)
1. CARPET	25	450
2. VINYL WALL COVERING	15	50
3. PINBOARD	25	50
4. BATT INSULATION	25	450
5. ACOUSTICAL PANEL	25	450
6. FRP PANEL	25	450
7. LAY-IN ACOUSTICAL CEILING	25	15
8. HIGH IMPACT WALL COVERING	25	450
9. TOILET PARTITION	5	75
10. WALL/CORNER GUARDS	25	450
11. PLASTIC LAMINATE	*	*
12. ALUMINUM WINDOW BLINDS	*	*

ARF 0.45 WATTS/CM - CLASS 1 FLAMMABILITY CLASS 1 FIRE RATED

SMOKE DEVELOPED 0-15 (ASTM E84 TEST PROCEDURE)

BURN RATE 2.0CM/MIN.

RADIANT HEAT RESISTANCE 100 SEC/MIN. 95% NON-COMBUSTION MATERIALS. NO CURRENT METHOD OF TESTING. FLAME/SMOKE SPREAD IN ACCORDANCE WITH CBC 806. ADD NFPA 701 OR NONCOMBUSTIBLE MATERIALS

* NOT LISTED BY MANUFACTURER

FIRE SAFETY DURING CONSTRUCTION AND DEMOLITION

- COMPLY WITH 2007 CFC CHAPTER 14.
- ALL EXISTING BUILDING FIRE RESISTIVE ASSEMBLIES AND CONSTRUCTION SHALL BE MAINTAINED.
- ALL EXISTING AUTOMATIC FIRE SPRINKLER AND AUTOMATIC FIRE-EXTINGUISHING SYSTEMS SHALL BE MAINTAINED DURING CONSTRUCTION IN BUILDINGS IN THE SCOPE OF WORK UNLESS OTHERWISE NOTED.
- ALL EXISTING MEANS OF EGRESS SHALL BE KEPT OPEN AND CLEAR OF MATERIALS, EQUIPMENT AND DEBRIS.
- PROVIDE EMERGENCY TELEPHONE ON SITE. THE STREET ADDRESS OF THE CONSTRUCTION SITE AND THE EMERGENCY NUMBER OF THE FIRE DEPARTMENT SHALL BE POSTED ADJACENT TO THE TELEPHONE.
- PROVIDE FIRE EXTINGUISHER CONFORMING TO CFC SECTION 906 IN EACH BUILDING AND EVERY FLOOR LEVEL IN THE SCOPE OF WORK.
- COMBUSTIBLE DEBRIS SHALL NOT BE ACCUMULATED WITHIN BUILDINGS.
- COMBUSTIBLE DEBRIS, WASTE MATERIAL AND/OR TRASH SHALL NOT BE BURNED ON SITE.
- SMOKING IS PROHIBITED WITHIN ALL BUILDINGS AND ON CAMPUS.
- EXISTING BUILDINGS SHALL BE VACATED OR CONTRACTOR SHALL PROVIDE A FIRE WATCH AT ALL TIMES WHEN THE EXISTING FIRE ALARM IS NOT OPERATIONAL. WHEN UTILIZED, FIRE WATCHES SHALL BE PROVIDED WITH AT LEAST ONE APPROVED MEANS FOR NOTIFICATION OF THE FIRE DEPARTMENT AND THE SCHOOL OFFICE. THEIR DUTY SHALL BE TO PERFORM CONSTANT PATROLS OF THE PROTECTED PREMISES AND KEEP WATCH FOR FIRE. COMPLY WITH CFC SECTION 901.7.
- THE BUILDING OWNER SHALL ASSIGN AN IMPAIRMENT COORDINATOR TO COMPLY WITH THE REQUIREMENTS OF CFC SECTION 901.7 (FIRE ALARM SYSTEMS OUT OF SERVICE), IN ABSENCE OF A SPECIFIC DESIGNEE, THE OWNER SHALL BE CONSIDERED THE IMPAIRMENT COORDINATOR.

SAFETY GLAZING REQUIREMENTS

- ALL SAFETY GLAZING SHALL CONFORM TO THE REQUIREMENTS OF 2007 CBC SECTION 2406.
- EACH PANE OF SAFETY GLASS SHALL BE IDENTIFIED BY A MANUFACTURER'S DESIGNATION SPECIFYING WHO APPLIED THE DESIGNATION, THE MANUFACTURER OR INSTALLER AND THE SAFETY GLAZING STANDARD WITH WHICH IT COMPLIES. THE IDENTIFICATION SHALL BE ACID ETCHED, SAND BLASTED, CERAMIC FIRED, LASER ETCHED, EMBOSSED OR OF A TYPE THAT ONCE APPLIED CANNOT BE REMOVED WITHOUT BEING DESTROYED (REFER TO SECTION 2406.2)
- GLAZING SHALL COMPLY WITH TABLE 2403.2.1 MINIMUM GLAZING REQUIREMENTS AND TABLE 2403.6 ADDITIONAL REQUIREMENTS FOR GLAZING MATERIAL.
- GLAZING SHALL COMPLY WITH TABLE 2406.1 MINIMUM CATEGORY CLASSIFICATION OF GLAZING.
- GLAZING IN EXIT AND ENTRANCE DOORS AND FIXED PANELS OVER 6 SQUARE FEET IN AREA SHALL PASS THE TEST REQUIREMENTS OF ANSI Z97.1 (REFER TO TABLE 2406.1.5 IMPACT LOADS - GLAZING).

TYPICAL ABBREVIATIONS

ABS	ABSOLUTE	I.M.C.	INTERMEDIATE METALLIC CONDUIT
A.C.	ASPHALTIC CONCRETE	ISA	INTERNATIONAL SYMBOL OF ACCESSIBILITY
ACCESS.	ACCESSIBLE	L.L.H.	LONG LEG HORIZONTAL
A.C.T.	ACOUSTIC CEILING TILE	L.L.V.	LONG LEG VERTICAL
A.F.F.	ABOVE FINISHED FLOOR	L.P.	LOW POINT
ALS	ASSISTIVE LISTENING SYSTEM	MAX.	MAXIMUM
ALUM.	ALUMINUM	MIN.	MINIMUM
BLKG.	BLOCKING	(N)	NEW
C.B.	CATCH BASIN	NO.	NUMBER
CBC	CALIFORNIA BUILDING CODE, 2007 EDITION	NOM.	NOMINAL
C.G.	CORNER GUARD	N.T.S.	NOT TO SCALE
C.J.	CONTROL JOINT	O.D.	OUTSIDE DIAMETER
C.L.	CHAIN LINK	O.C.	ON CENTER
CLG.	CEILING	O.L.	OCCUPANT LOAD
CLR.	CLEAR, CLEARANCE	P.C./P.C.C.	PORTLAND CEMENT (CONCRETE)
C.M.U.	CONCRETE MASONRY UNIT	P.H.	PANIC HARDWARE
CONC.	CONCRETE	P.H.W.S.	PAN HEAD WOOD SCREW
CPT.	CARPET	PLB.	PLUMBING
C.S.	COUNTER SUNK	PLYWD.	PLYWOOD
CSFM	CALIFORNIA STATE FIRE MARSHAL	PLAS.LAM.	PLASTIC LAMINATE
DIA.	DIAMETER	P.M.E.J.	PRE-MOLDED EXPANSION JOINT
DCS	DIAPER CHANGING STATION	PSI	POUNDS PER SQUARE INCH
D.F.	DRINKING FOUNTAIN	P.T.	PRESSURE TREATED
DRWG.	DRAWING	R.C.	RAINWATER CONDUCTOR
DRWGS.	DRAWINGS	RESIL.	RESILIENT
DTL.	DETAIL	RE:	REFER TO
(E)	EXISTING	REV	REVERSE
E.J.	EXPANSION JOINT	R.H.W.S.	ROUND HEAD WOOD SCREW
ELEC.	ELECTRICAL	R.W.D.	REDWOOD
E.M.T.	ELECTRIC METALLIC TUBING	R.W.L.	RAIN WATER LEADER
E.W.	EACH WAY	S.A.F.B.	SOUND ATTENUATION FIBER BATT
EXP.	EXPANSION	S.B.I.	SOUND BATT INSULATION
F/A, F.A.	FIRE ALARM	SCH.	SCHEDULE
F.D.	FLOOR DRAIN	SHT.	SHEET
F.E.	FIRE EXTINGUISHER	SIM.	SIMILAR
F.F.	FINISH FLOOR	S.M.S.	SHEET METAL SCREW (SELF-TAPPING)
F.H.W.S.	FLAT HEAD WOOD SCREW	S.S.	STAINLESS STEEL
FIN.	FINISH	T.B.	TACK BOARD
FLR.	FLOOR	THK.	THICK
F.O.F.	FACE OF FINISH	T.O.M.	TOP OF MASONRY
F.O.S.	FACE OF STUD	T.O.P.	TOP OF PARAPET
F.R.G.	FIBERGLASS REINFORCED GYPSUM	T.O.S.	TOP OF STEEL
F.V.	FIELD VERIFY	T.O.W.	TOP OF WALL
FS	FLOOR SINK	TW	TREAD WIDTH
G.I.	GALVANIZED IRON	TYP.	TYPICAL
G.P.F.	GALLONS PER FLUSH	U.O.N.	UNLESS OTHERWISE NOTED
GYP. BD.	GYPSUM BOARD	VCT	VINYL COMPOSITION TILE
H.D.P.B.	HIGH DENSITY PARTICLE BOARD	VERT.	VERTICAL
H.H.	HEX HEAD	VRS	VARIABLES
H.P.	HIGH POINT	V.T.R.	VENT THROUGH ROOF
HT.	HEIGHT	V.W.C.	VINYL WALL COVERING
HORIZ.	HORIZONTAL	W.G.	WALL GUARD
I.D.	INSIDE DIAMETER	W.H.	WATER HEATER
		W.P.F.	WORKING POINT
		WWF	WELDED WIRE FABRIC

SYMBOLS

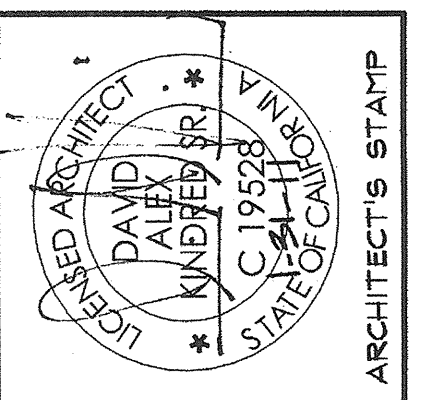
	CLASSROOM		ROOM NAME, RE: FLOOR PLAN BUILDING DESIGNATION (NUMBER, LETTER) ROOM NUMBER
	BUILDING DESIGNATION (NUMBER, LETTER, ETC.) DOOR NUMBER		P.H. WHERE OCCURS, RE: FLOOR PLAN DOOR SCHEDULE
	WALL TYPE		REVISION NUMBER
	BUILDING DESIGNATION (NUMBER, LETTER, ETC.) WINDOW NUMBER		BUILDING / ROOM SIGNAGE
	PRIMARY KEYNOTE		SECONDARY KEYNOTE
	TOILET ACCESSORY		ELEVATION DRAWING NUMBER
	ELEVATION DRAWING NUMBER		BUILDING SECTION NUMBER
	EXTENT OF DETAIL		WALL SECTION OR DETAIL
	DRAWING NUMBER		WALL SECTION OR DETAIL NUMBER
	ELEVATED DIMENSION POINT / DATUM POINT		TELEVISION
	FLUORESCENT LIGHT FIXTURE (RECESSED)		FLUORESCENT LIGHT FIXTURE (SURFACE)
	INCANDESCENT LIGHT FIXTURE (RECESSED)		INCANDESCENT LIGHT FIXTURE (SURFACE)
	EMERGENCY FLUORESCENT LIGHT (RECESSED)		EMERGENCY INCANDESCENT LIGHT (SURFACE WALL PACK)
	EXIT LIGHT		SPEAKER
	SUPPLY AIR DIFFUSER		RETURN AIR DIFFUSER
	TIME CLOCK (12" BELOW CEILING)		HOSE BIBB
	RECESSED HOSE BIBB		FIRE EXTINGUISHER (SURFACE MOUNTED)
	FIRE EXTINGUISHER IN CABINET (RECESSED)		

CONTRACTOR INSTRUCTIONS

- A COPY OF PARTS 1 & 2, TITLE 24 SHALL BE KEPT ON THE JOB AT ALL TIMES.
- ALL CHANGED ORDERS AND ADDENDA TO BE SIGNED BY THE ARCHITECT AND THE OWNER AND APPROVED BY DSA. CHANGE ORDERS NOT VALID UNTIL APPROVED BY DSA (4-338).
- ALL TEST TO CONFORM TO THE REQUIREMENTS OF SECTION 4-335 AND APPROVED T&I SHEET.
- TEST OF MATERIALS AND TESTING LAB SHALL BE IN ACCORDANCE WITH SECTION 4-335 AND THE DISTRICT SHALL EMPLOY AND PAY THE LAB. COST OF RE-TESTS MAY BE BACK CHARGED TO THE CONTRACTOR. TESTING LAB TO BE APPROVED BY D.S.A.
- DSA SHALL BE NOTIFIED AT THE START OF CONSTRUCTION PER SECTION 4-331.
- INSPECTOR TO BE APPROVED BY DSA. INSPECTOR TO BE IN ACCORDANCE WITH SECTION 4-333(a). THE DUTY OF THE INSPECTOR SHALL BE IN ACCORDANCE WITH SECTION 4-342.
- SUPERVISION OF CONSTRUCTION BY DSA SHALL BE IN ACCORDANCE WITH SECTION 4-334.
- CONTRACTOR, INSPECTOR, ARCHITECT, AND ENGINEERS SHALL SUBMIT VERIFIED REPORTS (SSS-8) IN ACCORDANCE WITH SECTIONS 4-336 AND 4-343.
- THE ARCHITECT AND ENGINEER SHALL PERFORM THEIR DUTIES IN ACCORDANCE WITH SECTIONS 4-333(a) AND 4-341.
- THE CONTRACTORS SHALL PERFORM THEIR DUTIES IN ACCORDANCE WITH SECTION 4-343.

CONSTRUCTION GENERAL NOTES

- ALL WORK SHALL CONFORM TO CBC, 2007 EDITION
- ANY FIRE RESISTIVE WALL OR ASSEMBLY DAMAGED OR CUT DURING CONSTRUCTION SHALL BE REPAIRED OR FIRE-STOPPED TO MAINTAIN THE ORIGINAL FIRE RESISTIVE RATING.
- THE CONTRACTOR SHALL BE RESPONSIBLE FOR LOCATING AND VERIFYING ALL EXISTING UNDERGROUND UTILITIES IN ALL AREAS OF NEW WORK PRIOR TO COMMENCEMENT OF ANY EXCAVATION. EXISTING UTILITIES SHOWN ON DRAWINGS ARE APPROXIMATE AS DETERMINED FROM EXISTING DRAWINGS AND FROM SCHOOL DISTRICT DOCUMENTATION. THE DRAWINGS SHOULD NOT BE CONSTRUED TO REPRESENT ALL EXISTING UTILITIES OR EXACT LOCATION OF UTILITIES.
- ALL EXISTING ITEMS SUCH AS CABINETS, ELECTRICAL COMPONENTS, FIXTURES, FURNISHINGS AND EQUIPMENT MAY NOT BE ACCOUNTED FOR OR CORRECTLY SHOWN ON THE DRAWINGS AND IT WILL BE THE CONTRACTOR'S RESPONSIBILITY TO VERIFY ALL EXISTING CONDITIONS IN EACH ROOM SO THAT THE WORK CAN BE ACCOMPLISHED.
- NOT ALL MECHANICAL, PLUMBING AND ELECTRICAL ITEMS MAY BE SHOWN ON THE ARCHITECTURAL DRAWINGS. REFER TO THE MECHANICAL, PLUMBING AND ELECTRICAL DRAWINGS PROVIDED FOR THIS PROJECT.
- THE TERM TYPICAL DETAIL OR TYPICAL MEANS THE DETAIL OR CONDITION SHOWN APPLIES TO WHEREVER THE DETAIL OR CONDITION OCCURS.
- FIELD VERIFY (F.V.) MEANS THE CONTRACTOR IS REQUIRED TO FIELD SURVEY THE NOTED CONDITION AND/OR DIMENSION PRIOR TO CONSTRUCTION OR PREPARATION OF SUBMITTAL SHOP DRAWINGS AND INTEGRATE FIELD SURVEY INFORMATION INTO THE CONSTRUCTION.
- ALL EXISTING ITEMS ON A WALL OR CEILING THAT IS SCHEDULED TO RECEIVE PAINT SHALL BE PAINTED ALSO, WHETHER INDICATED ON DRAWINGS OR NOT UNLESS OTHERWISE NOTED. THIS INCLUDES BUT IS NOT LIMITED TO MECHANICAL DIFFUSERS, VENTS, PIPING, CONDUIT, PULL BOXES, JUNCTION BOXES, BEAMS, FURR-DOWNS AND SOFFITS.
- FLOOR AREAS WHERE EXISTING CARPET OR TILE HAS BEEN REMOVED SHALL BE PATCHED, REPAIRED AND LEVELED TO RECEIVE NEW FLOOR FINISH.
- FOOD HANDLING FACILITIES SHALL COMPLY WITH ALL LOCAL HEALTH DEPARTMENT REQUIREMENTS AND CALIFORNIA UNIFORM RETAIL FOOD FACILITIES LAW.
- IN THE EVENT OF CONFLICT BETWEEN DRAWINGS OR BETWEEN A DRAWING AND A SPECIFICATION ITEM THE DRAWING OR SPECIFICATION ITEM REQUIRING GREATER EXTENT, LARGER NUMBER OR HIGHER QUALITY SHALL GOVERN.



ARCHITECT'S STAMP

OAK PARK UNIFIED SCHOOL DISTRICT
 SCHOOL DISTRICT
 BROOKSIDE ELEMENTARY SCHOOL
 MODERNIZATION
 UNIFIED SCHOOL DISTRICT

KPI Architects Inc.
 10 East Orange Ave., Suite 105
 Costa Mesa, California 92626-1092
 Phone: (800) 366-6351 Fax: (877) 483-2059

barnhart, inc.
 A HEERY INTERNATIONAL COMPANY

PROJECT NO. : 234800 DATE: 09-02-09

GENERAL NOTES, ABBREVIATIONS AND SYMBOLS

13-01R

A0.2

IDENTIFICATION STAMP
 DIV. OF THE STATE ARCHITECT

APPL 03-113415

AC. *FLS* SS *HA*

DATE: 10/20/10

DSA STAMP

FASTENING SCHEDULE

BASED ON TABLE 2304.9.1, 2007 CBC

CONNECTION	FASTENING	LOCATION
1. JOIST TO SILL OR GIRDER	3- 8d COMMON (2 1/2"x0.131") 3- 3"x0.131" NAILS 3- 3" 14 GAUGE STAPLES	TOENAIL
2. BRIDGING TO JOIST	2- 8d COMMON (2 1/2"x0.131") 2- 3"x0.131" NAILS 2- 3" 14 GAUGE STAPLES	TOENAIL EACH END
3. 1"x6" SUBFLOOR OR LESS TO EACH JOIST	2- 8d COMMON (2 1/2"x0.131")	FACE NAIL
4. WIDER THAN 1"x6" SUBFLOOR TO EACH JOIST	3- 8d COMMON (2 1/2"x0.131")	FACE NAIL
5. 2" SUBFOLDER TO JOIST OR GIRDER	2- 16d COMMON (3 1/2"x0.162")	BLIND AND FACE NAIL
6. SOLE PLATE TO JOIST OR BLOCKING SOLE PLATE TO JOIST OR BLOCKING AT BRACED WALL PANEL	16d (3 1/2"x0.135") AT 16" O.C. 3"x0.131" NAILS AT 8" O.C. 3" 14 GAUGE STAPLES AT 12" O.C. 3" - 16d (3 1/2"x0.135") AT 16" 4- 3"x0.131" NAILS AT 16" 4- 3" 14 GAUGE STAPLES PER 16"	TYPICAL FACE NAIL BRACED WALL PANELS
7. TOP PLATE TO STUD	2- 16d COMMON (3 1/2"x0.162") 3- 3"x0.131" NAILS 3- 3" 14 GAUGE STAPLES	END NAIL
8. STUD TO SOLE PLATE	4- 8d COMMON (2 1/2"x0.131") 4- 3"x0.131" NAILS 3- 3" 14 GAUGE STAPLES 2- 16d COMMON (3 1/2"x0.162") 3- 3"x0.131" NAILS 3- 3" 14 GAUGE STAPLES	TOENAIL END NAIL
9. DOUBLE STUDS	16d (3 1/2"x0.135") AT 24" O.C. 3"x0.131" NAIL AT 8" O.C. 3" 14 GAUGE STAPLE AT 2" O.C.	FACE NAIL
10. DOUBLE TOP PLATES DOUBLE TOP PLATES	16d (3 1/2"x0.135") AT 16" O.C. 3"x0.131" NAIL AT 12" O.C. 3" 14 GAUGE STAPLE AT 12" O.C. 8- 16d COMMON (3 1/2"x0.162") 12- 3"x0.131" NAILS 12- 3" 14 GAUGE STAPLES	TYPICAL FACE NAIL LAP SPLICE
11. BLOCKING BETWEEN JOISTS OR RAFTERS TO TOP PLATE	3- 8d COMMON (2 1/2"x0.131") 3- 3"x0.131" NAILS 3- 3" 14 GAUGE STAPLES	TOENAIL
12. RIM JOIST TO TOP PLATE	8d (2 1/2"x0.131") AT 6" O.C. 3"x0.131" NAIL AT 6" O.C. 3" 14 GAUGE STAPLES AT 6" O.C.	TOENAIL
13. TOP PLATES, LAPS AND INTERSECTIONS	2- 16d COMMON (3 1/2"x0.162") 3- 3"x0.131" NAILS 3- 3" 14 GAUGE STAPLES	FACE NAIL
14. CONTINUOUS HEADER, TWO PIECES	16d COMMON (3 1/2"x0.162")	16" O.C. ALONG EDGE
15. CEILING JOISTS TO PLATE	3- 8d COMMON (2 1/2"x0.131") 5- 3"x0.131" NAILS 5- 3" 14 GAUGE STAPLES	TOENAIL
16. CONTINUOUS HEADER TO STUD	4- 8d COMMON (2 1/2"x0.131")	TOENAIL
17. CEILING JOISTS, LAPS OVER PARTITIONS (SEE SECTION 2308.10.4.1, TABLE 2308.10.4.1)	3- 16d COMMON (3 1/2"x0.162") MINIMUM, TABLE 2308.10.4.1 4- 3"x0.131" NAILS 4- 3" 14 GAUGE STAPLES	FACE NAIL
18. CEILING JOISTS TO PARALLEL RAFTERS (SEE SECTION 2308.10.4.1, TABLE 2308.10.4.1)	3- 16d COMMON (3 1/2"x0.162") MINIMUM, TABLE 2308.10.4.1 4- 3"x0.131" NAILS 4- 3" 14 GAUGE STAPLES	FACE NAIL
19. RAFTER TO PLATE (SEE SECTION 2308.10.1, TABLE 2308.10.1)	3- 8d COMMON (2 1/2"x0.131") 3- 3"x0.131" NAILS 3- 3" 14 GAUGE STAPLES	TOENAIL
20. 1" DIAGONAL BRACE TO EACH STUD AND PLATE	2- 8d COMMON (2 1/2"x0.131") 2- 3"x0.131" NAILS 3- 3" 14 GAUGE STAPLES	FACE NAIL
21. 1"x8" SHEATHING TO EACH BEARING	3- 8d COMMON (2 1/2"x0.131")	FACE NAIL
22. WIDER THAN 1"x8" SHEATHING TO EACH BEARING	3- 8d COMMON (2 1/2"x0.131")	FACE NAIL
23. BUILT-UP CORNER STUDS	16d COMMON (3 1/2"x0.162") 3"x0.131" NAILS 3" 14 GAUGE STAPLES	24" O.C. 16" O.C. 16" O.C.
24. BUILT-UP GIRDER AND BEAMS	20d COMMON (4"x0.192") 32" O.C. 3"x0.131" NAIL AT 24" O.C. 3" 14 GAUGE STAPLE AT 24" O.C. 2- 20d COMMON (4"x0.192") 3- 3"x0.131" NAILS 3- 3" 14 GAUGE STAPLES	FACE NAIL AT TOP AND BOTTOM STAGGERED ON OPPOSITE ENDS FACE NAIL AT ENDS AND AT EACH SPLICE
25. 2" PLANKS	16d COMMON (3 1/2"x0.162")	AT EACH BEARING
26. COLLAR TIE TO RAFTER	3- 10d COMMON (3"x0.148") 4- 3"x0.131" NAILS 4- 3" 14 GAUGE STAPLES	FACE NAIL
27. JACK RAFTER TO HIP	3- 10d COMMON (3"x0.148") 4- 3"x0.131" NAILS 4- 3" 14 GAUGE STAPLES	TOENAIL
28. ROOF RAFTER TO 2-BY RIDGE BEAM	2- 16d COMMON (3 1/2"x0.162") 3- 3"x0.131" NAILS 3- 3" 14 GAUGE STAPLES 2- 16d COMMON (3 1/2"x0.162") 3- 3"x0.131" NAILS 3- 3" 14 GAUGE STAPLES	FACE NAIL
29. JOIST TO BAND JOIST	3- 16d COMMON (3 1/2"x0.162") 4- 3"x0.131" NAILS 4- 3" 14 GAUGE STAPLES	FACE NAIL
30. LEDGER STRIP	3- 16d COMMON (3 1/2"x0.162") 4- 3"x0.131" NAILS 4- 3" 14 GAUGE STAPLES	FACE NAIL

FASTENING SCHEDULE CONTINUED

BASED ON TABLE 2304.9.1, 2007 CBC

CONNECTION	FASTENING	LOCATION
31. WOOD STRUCT. PANELS AND PARTICLEBOARD SUBFLOOR, ROOF AND WALL SHEATHING (TO FRAMING)	1/2" AND LESS 2 3/4"x0.113" NAIL 1 1/2" 16 GAUGE 8d OR 6d 2 3/4"x0.113" NAIL 2" 16 GAUGE	TOENAIL
32. SINGLE FLOOR (COMBINATION SUBFLOOR-UNDERLAYMENT TO FRAMING)	7/8" TO 1" 1 1/8" TO 1 1/2" 3/4" AND LESS 7/8" TO 1" 1 1/8" TO 1 1/2"	FACE NAIL
33. PANEL SIDING (TO FRAMING)	1/2" OR LESS 8d	BLIND AND FACE NAIL
34. FIBERBOARD SHEATHING	NO. 11 GAUGE ROOFING NAIL 6d COMMON NAIL (2"x0.113") NO. 16 GAUGE STAPLE NO. 11 GAUGE ROOFING NAIL 8d COMMON NAIL (2 1/2"x0.131") NO. 16 GAUGE STAPLE	TYPICAL FACE NAIL BRACED WALL PANELS
35. INTERIOR PANELING	1/2" 3/8"	FACE NAIL

- FOR SI: 1 INCH - 25.4 MM
- COMMON OR BOX NAILS ARE PERMITTED TO BE USED EXCEPT WHERE OTHERWISE STATED
 - NAILS SPACED AT 6 INCHES ON CENTER AT EDGES, 12 INCHES AT INTERMEDIATE SUPPORTS EXCEPT 8 INCHES AT SUPPORTS WHERE SPANS ARE 48 INCHES OR MORE. FOR NAILING OF WOOD STRUCTURAL PANEL AND PARTICLEBOARD DIAPHRAGMS AND SHEAR WALLS, REFER TO SECTION 2305. NAILS FOR WALL SHEATHING ARE PERMITTED TO BE COMMON, BOX OR CASING
 - COMMON OR DEFORMED SHANK (6d - 2"x0.113"; 8d - 2 1/2"x0.131"; 10d - 3"x0.148")
 - COMMON (6d - 2"x0.113; 8d - 2 1/2"x0.131; 10d - 3"x0.148")
 - DEFORMED SHANK (6d - 2"x0.113; 8d - 2 1/2"x0.131; 10d - 3"x0.148")
 - CORROSION-RESISTANT SIDING (6d - 1 1/2"x0.106; 8d - 2 1/2"x0.128") OR CASING (6d - 2"x0.099"; 8d - 2 1/2"x0.113") NAIL
 - FASTENERS SPACED 3 INCHES ON CENTER AT EXTERIOR EDGES AND 6 INCHES ON CENTER AT INTERMEDIATE SUPPORTS. WHEN USED AS STRUCTURAL SHEATHING, SPACING SHALL BE 6 INCHES ON CENTER ON THE EDGES AND 12 INCHES ON CENTER AT INTERMEDIATE SUPPORTS FOR NON-STRUCTURAL APPLICATIONS
 - CORROSION-RESISTANT ROOFING NAILS WITH 7/8" INCH DIAMETER HEAD AND 1 1/2" INCH LENGTH FOR 1/2" INCH SHEATHING AND 1 3/4" INCH LENGTH FOR 23/32" INCH SHEATHING
 - CORROSION-RESISTANT STAPLES WITH NOMINAL 7/8" INCH CROWN AND 1 1/2" INCH LENGTH FOR 1/2" INCH SHEATHING AND 1 3/4" INCH LENGTH FOR 23/32" INCH SHEATHING. PANEL SUPPORTS AT 16 INCHES (20 INCHES IF STRENGTH AXIS IN THE LONG DIRECTION OF THE PANEL, UNLESS OTHERWISE MARKED)
 - CASING (1 1/2"x0.080") OR FINISH (1 1/2"x0.072") NAILS SPACED 6 INCHES ON PANEL EDGES, 12 INCHES AT INTERMEDIATE SUPPORTS
 - PANEL SUPPORTS AT 24 INCHES. CASING OR FINISH NAILS SPACED 6 INCHES ON PANEL EDGES, 12 INCHES AT INTERMEDIATE SUPPORTS
 - FOR ROOF SHEATHING APPLICATIONS, 8d NAILS (2 1/2"x0.113") ARE THE MINIMUM REQUIRED FOR WOOD STRUCTURAL PANELS
 - STAPLES SHALL HAVE A MINIMUM CROWN WIDTH OF 7/8" INCH
 - FOR ROOF SHEATHING APPLICATIONS, FASTENERS SPACED 4 INCHES ON CENTER AT EDGES, 8 INCHES AT INTERMEDIATE SUPPORTS
 - FASTENERS SPACED 4 INCHES ON CENTER AT EDGES, 8 INCHES AT INTERMEDIATE SUPPORTS FOR SUBFLOOR AND WALL SHEATHING AND 3 INCHES ON CENTER AT EDGES, 6 INCHES AT INTERMEDIATE SUPPORTS FOR ROOF SHEATHING
 - FASTENERS SPACED 4 INCHES ON CENTER AT EDGES, 8 INCHES AT INTERMEDIATE SUPPORTS

POWDER DRIVEN SHOT PINS

- (LOWER VELOCITY)
- SHOT PINS MAY BE USED FOR SHEAR LOADS AND THEY MAY BE USED IN TENSION TO SUPPORT LOADS LESS THAN 100 POUNDS FOR MINOR LOADS LIKE ACOUSTICAL CEILING, DUCTWORK AND CONDUIT. ANY SHOT ANCHORS MUST HAVE ICC APPROVAL FOR THE TYPE OF CONCRETE USED ON THE JOB. SHOT PINS MAY NOT BE USED IN CONCRETE CURBS.
 - THE ALLOWABLE LOADS SHALL BE 100 POUNDS OR 80% OF ICC APPROVED VALUES WHICHEVER IS LESS. QUALIFICATION FOR USE OF ALL POWDER ACTUATED TOOLS MUST MEET ANSI A10.3 STANDARD AS REQUIRED BY THE MANUFACTURER AND ALL OSHA REQUIREMENTS.
 - TESTING: THE OPERATOR, TOOL AND FASTENER SHALL BE PRE-QUALIFIED BY THE PROJECT INSPECTOR. HE SHALL OBSERVE THE TESTING OF THE FIRST 10 FASTENER INSTALLATIONS. A TEST "PULL-OUT" LOAD OF NOT LESS THAN 200# SHALL BE APPLIED TO THE PIN IN SUCH A MANNER AS NOT TO RESIST THE SPALLING TENDENCY OF THE CONCRETE SURROUNDING THE PIN. THEREAFTER, RANDOM TESTS UNDER THE PROJECT INSPECTOR'S SUPERVISION SHALL BE MADE APPROXIMATELY 1 IN 10 PINS. IF ANY PIN FAILS TESTING, TEST ALL PINS OF THE SAME CATEGORY NOT PREVIOUSLY TESTED UNTIL TWENTY (20) CONSECUTIVE PASS, THEN RESUME THE INITIAL TESTING FREQUENCY. SHOT-IN ANCHORS ARE NOT PERMITTED FOR BRACING WIRES.
- PIN TYPE AND APPROVAL:
NON-SHEAR WOOD AND METAL STUD WALL ATTACHMENT TO CONCRETE FLOOR: RAMSET/REDHEAD 1524SD (ESR-1799) UNLESS OTHERWISE NOTED.

ADHESIVE ANCHORS					
HILTI HIT HY-150 MAXIMUM ADHESIVE (ICC ESR-1967)					
ASTM A36 THREADED ROD (F _y = 36 KSI)			NORMAL WEIGHT CONCRETE		
ANCHOR DIAMETER	EMBED. DEPTH (INCHES)	TENSION (LBS)		SHEAR ¹ (LBS)	
		WITH SPECIAL INSPECT. ¹	TEST LOAD ^{1,4}	WITH SPECIAL INSPECT. ¹	TEST LOAD ^{1,4}
3/8"	1-3/4"	725	1450	1155	2310
	3-3/8"	2110	3182	2115	3182
	4-1/2"	2115	3182	2090	4180
1/2"	2-1/4"	1385	2770	1935	3870
	4-1/2"	3775	5653	3775	5653
	5"	3775	5653	3775	5653
5/8"	2-7/8"	1940	3880	2730	5460
	5-5/8"	5870	8836	5870	8836
	7-1/2"	5870	8836	5870	8836
3/4"	3-3/8"	2625	5250	4295	8590
	6-3/4"	6480	12724	8455	12724
	9"	8455	12724	8455	12724
1"	4-1/2"	5210	10420	7490	14980
	9"	11595	22620	15030	22620
	12"	15030	22620	15030	22620

- ALLOWABLE LOAD = THE LESSER OF 80% OF THE ALLOWABLE TENSION OR SHEAR VALUE BASED ON BOND OR CONCRETE CAPACITY AS LISTED IN THE REFERENCED ICC REPORT OR 100% OF THE ALLOWABLE TENSION OR SHEAR VALUE BASED ON STEEL STRENGTH.
- TENSION TEST = THE LESSER OF 2 x THE ALLOWABLE TENSION VALUE LISTED IN THE REFERENCED ICC REPORT OR 80% OF THE YIELD STRENGTH OF THE BOLT PER DSA IR 19-1. LISTED TENSION TEST VALUES ONLY APPLY TO ANCHORS MEETING CRITICAL SPACING AND EDGE DISTANCE REQUIREMENTS PER THE REFERENCED ICC REPORT. REDUCED TENSION TEST VALUES SHALL BE OBTAINED FROM THE ENGINEER OF RECORD AND APPROVED BY DSA FOR ANCHORS WITH REDUCED SPACING AND/OR EDGE DISTANCE.
- INTERPOLATE VALUES FOR F_c BETWEEN 2000 PSI AND 4000 PSI.
- TENSION TEST ANCHORS PER EXPANSION AND ADHESIVE ANCHOR NOTES.

LUMBER NOTES

- NOTE: ON RECONSTRUCTION PROJECTS, ALL FRAMING LUMBER SHALL BE PER THE STRUCTURAL AS-BUILT DRAWINGS AND SPECIFICATIONS
- NOTE: ON MODERNIZATION PROJECTS, ALL FRAMING LUMBER SHALL BE PER THE STRUCTURAL DRAWINGS AND SPECIFICATIONS
- ALL FRAMING LUMBER SHALL BE STRUCTURAL GRADE MARKED DOUGLAS FIR-LARCH AS FOLLOWS:
A. BEAM, POST, HEADERS, STRINGERS..... NO.1
B. JOIST AND RAFTERS STUDS AND BETTER..... NO.1
C. ALL OTHER FRAMING..... NO.1
 - STRUCTURAL PLYWOOD SHEATHING SHALL BE APA GRADED CONFORMING TO PSI-95 STRUCTURAL 1 GRADE. INSTALLATION SHALL BE INSPECTED AND APPROVED PRIOR TO COVERING.
 - ALL WOOD IN CONTACT WITH CONCRETE OR MASONRY SHALL BE PRESSURE-TREATED WOOD WITH AWP/PA STAMP AND CBC 2007, SECTION 2304.
 - ALL NAILS SHALL BE COMMON NAILS. CONNECTIONS SHALL PER THE NAILING SCHEDULE IN CBC 2007 TABLE 2304.9.1. EXCEPT WHERE NOTED OR DETAILED OTHERWISE.
 - REFER TO MACHINE APPLIED NAILING NOTES.
 - SILLS FOR ALL BEARING WALLS AND SHEAR WALLS SHALL BE COMPLETELY BEDDED ON 1/2" DRYPACK.
 - WHERE STUD WALL JOINS CONCRETE OR MASONRY WALL, THE END STUD SHALL BE ANCHORED THERETO WITH 1/2" DIAMETER ANCHOR BOLTS NEAR TOP AND BOTTOM AND AT EACH LEVEL OF FIRE BLOCKING.
 - NO STRUCTURAL MEMBER SHALL BE CUT FOR PIPES, DUCTS, OR ANY MISCELLANEOUS ITEMS, EXCEPT AS DETAILED ON THE STRUCTURAL DRAWINGS.
 - SOLID BLOCKING SHALL BE PLACED BETWEEN ALL JOISTS AND RAFTERS AT ALL POINTS OF SUPPORT AND AT 10 FOOT INTERVALS FOR RAFTERS AND AT 6 FOOT INTERVALS FOR JOISTS.
 - AT FLOORS FRAMED WITH 2X LUMBER PROVIDE DOUBLE JOISTS UNDER ALL PARALLEL PARTITIONS.
 - ALL LUMBER TO BE 15% MOISTURE CONTENT OR LESS, AT TIME OF INSTALLATION (S-DRY).

FASTENER GENERAL NOTES

- REFER TO POWDER DRIVEN SHOT PINS NOTES ON THIS SHEET FOR SHOT PINS REQUIREMENTS.
- REFER TO EXPANSION BOLTS NOTES ON THIS SHEET FOR EXPANSION BOLT REQUIREMENTS.
- REFER TO EPOXY ADHESIVE ANCHOR NOTES ON THIS SHEET FOR EPOXY ADHESIVE ANCHOR REQUIREMENTS.
- REFER TO MACHINE APPLIED NAILING NOTES ON THIS SHEET FOR MACHINE APPLIED NAILING REQUIREMENTS.
- ALL NAILS SHALL BE COMMON NAILS UNLESS OTHERWISE NOTED. ALL NAILING SHALL BE PER THE 2007 CBC TABLE 2304.9.1.
- NAILS DRIVEN INTO PRESSURE TREATED WOOD SHALL BE HOT DIPPED GALVANIZED.
- BOLT HOLES SHALL BE DRILLED 1/32" GREATER THAN BOLT DIAMETER. BOLTS SHALL HAVE STANDARD CUT WASHERS. BOLTS SHALL BE RE-TIGHTENED PRIOR TO COVERING STRUCTURE.
- PRE-DRILL ALL LAG SCREWS, LAG BOLTS AND WOOD SCREWS.
- USE OF EXPANSION BOLTS ARE NOT ALLOWED AT RAISED CONCRETE CURBS AT WALLS.

MACHINE APPLIED NAILING NOTES

USE OF MACHINE NAILING IS SUBJECT TO A SATISFACTORY JOB SITE DEMONSTRATION FOR EACH PROJECT AND APPROVAL BY THE PROJECT ARCHITECT OR STRUCTURAL ENGINEER AND THE DIVISION OF THE STATE ARCHITECT. THE APPROVAL IS SUBJECT TO CONTINUED SATISFACTORY PERFORMANCE. MACHINE NAILING WILL NOT BE APPROVED IN 5/16" PLYWOOD. IF NAIL HEADS PENETRATE THE OUTER PLY MORE THAN WOULD BE NORMAL FOR A HAND HAMMER OR IF MINIMUM ALLOWABLE EDGE DISTANCES ARE NOT MAINTAINED, THE PERFORMANCE WILL BE DEEMED UNSATISFACTORY AND THIS MACHINE NAILING SHALL BE DISCONTINUED.

SCHOOL EQUIPMENT ANCHORAGE NOTES

CBC 2007, 1614A AND ASCE-7-05 CH. 13

ALL MECHANICAL AND ELECTRICAL EQUIPMENT SHALL BE BRACED OR ANCHORED TO RESIST A HORIZONTAL FORCE ACTING IN ANY DIRECTION USING THE FOLLOWING CRITERIA:

EQUIPMENT ON GRADE	25% OF OPERATING WEIGHT
EQUIPMENT ON STRUCTURE	75% OF OPERATING WEIGHT

FOR FLEXIBLY MOUNTED EQUIPMENT USE 3 x THE ABOVE VALUES, AND FOR SIMULTANEOUS VERTICAL FORCE USE 1/3 x THE HORIZONTAL FORCE.

WHERE ANCHORAGE DETAILS ARE NOT SHOWN ON THE DRAWINGS THE FIELD INSTALLATION SHALL BE SUBJECT TO THE APPROVAL OF THE MECHANICAL/ELECTRICAL ENGINEER AND THE FIELD ENGINEER OF THE DIVISION OF THE STATE ARCHITECT.

*REVIEW FOR I = 1.15 WHERE BUILDING OCCUPANCY EQUALS OR EXCEEDS 250.

REFER TO MECHANICAL AND ELECTRICAL DRAWINGS.

CABINET ANCHORAGE

VERTICAL LOAD REQUIREMENT
LATERAL FORCE REQUIREMENT

TABLE NO. 1607A.1
SECTION 1614A

REFER TO BRACING AND ANCHORAGE DETAILS FOR WALL HUNG CABINETS AND FLOOR SUPPORTED STORAGE RACKS, CABINETS AND BOOK STACKS OVER FIVE FEET IN HEIGHT. THE SUPPORTING PARTITIONS AND WALL ARE TO RESIST FORCES APPLIED BY CABINET ANCHORAGES.

EXPANSION BOLT NOTES

- EXPANSION ANCHOR BOLT TYPE AND APPROVAL:
HILTI KWIK BOLT 3, ICC ESR-1385 FOR GRANITE AND MASONRY ONLY AND ITW CONSTRUCTION PRODUCTS RAMSET /REDHEAD TRUBOLT WEDGE, ICC ESR-2251, FOR CONCRETE
- | DIAMETER (inches) | MINIMUM EMBEDMENT (inches) |
|-------------------|----------------------------|
| 1/2 | 2-1/4 |
| 3/4 | 3-1/2 |
| 7/8 | 4 |
| 1 | 4-1/2 |
- CONCRETE ANCHOR BOLTS OF THE EXPANSION TYPE (LOADED IN EITHER PULLOUT OR SHEAR) SHALL BE TESTED IN ACCORDANCE WITH CBC, 2007 EDITION, SECTION 1704A.4
- | ANCHOR | TEST VALUES | | |
|--------|--|----------------------|----------------------|
| | HARDROCK OR LIGHTWEIGHT CONCRETE WEDGE | SLEEVE | SHELL |
| DIA. | LOAD TORQUE (lbs) | LOAD TORQUE (ft-lbs) | LOAD TORQUE (ft-lbs) |
| 1/4 | 800 | 400 | 1000 |
| 5/16 | - | 400 | 1400 |
| 3/8 | 1100 | 700 | 1800 |
| 1/2 | 2000 | 900 | 2700 |
| 5/8 | 2300 | 1100 | 3700 |
| 3/4 | 3700 | 1400 | 5400 |
| 1 | 5800 | 250 | - |

- NOTES:
- ANCHOR DIAMETER REFERS TO THE THREAD SIZE FOR THE WEDGE AND SHELL CATEGORIES AND TO THE ANCHOR OUTSIDE DIAMETER FOR THE SLEEVE CATEGORY.
 - APPLY PROOF TEST LOADS TO WEDGE AND SLEEVE ANCHORS WITHOUT REMOVING THE NUT IF POSSIBLE. IF NOT, REMOVE NUT AND INSTALL A THREADED COUPLER TO THE SAME TIGHTNESS OF THE ORIGINAL NUT USING A TORQUE WRENCH AND APPLY LOAD.
 - FOR SLEEVE/SHELL INTERNALLY THREADED CATEGORIES, VERIFY THAT THE ANCHOR IS NOT PREVENTED FROM WITHDRAWING BY A BASE PLATE OR OTHER FIXTURES. IF RESTRAINT IS FOUND, LOOSEN AND SHIM OR REMOVE FIXTURE(S) PRIOR TO TESTING.
 - CRITICAL LOADS FOR SHELL TEST FIXTURES MAY BE APPLIED CLOSE TO THE ANCHOR BEING TESTED, PROVIDED THE ANCHOR IS NOT RESTRAINED FROM WITHDRAWING BY THE FIXTURE(S).
 - SHELL TYPE ANCHORS SHOULD BE TESTED AS FOLLOWS: VISUALLY INSPECT 25% FOR FULL EXPANSION AS EVIDENCED BY THE LOCATION OF THE EXPANSION PLUG IN THE ANCHOR BODY. PLUG LOCATION OF A FULLY EXPANDED ANCHOR SHOULD BE AS RECOMMENDED BY THE MANUFACTURER, OR IN THE ABSENCE OF SUCH RECOMMENDATION, AS DETERMINED ON THE JOB SITE FOLLOWING THE MANUFACTURER'S INSTALLATION INSTRUCTIONS, AND PROOF LOAD 5% AS INDICATED IN THE TABLE ABOVE, BUT NOT LESS THAN THREE ANCHORS PER DAY FOR EACH DIFFERENT PERSON OR CREW INSTALLING ANCHORS, OR, TEST 50% OF THE INSTALLED ANCHORS.
 - TEST EQUIPMENT IS TO BE CALIBRATED BY AN APPROVED TESTING LABORATORY IN ACCORDANCE WITH STANDARD RENOVATED PROCEDURES.
 - TORQUE TEST VALUES FOR SHELL TYPE ANCHORS ARE OMITTED DUE TO A LACK OF DATA. TORQUE TESTING CAN OCCUR ON AN INDIVIDUAL BASIS WHEN TEST PROCEDURES ARE SUBMITTED AND APPROVED BY THE ENFORCEMENT AGENCY. TABULATED VALUES MAY BE FORTHCOMING ONCE THE ENFORCEMENT AGENCY HAS MORE DATA TO EVALUATE THE FEASIBILITY OF STANDARD TORQUE VALUES.
 - THE FOLLOWING CRITERIA APPLY FOR THE ACCEPTANCE OF INSTALLED ANCHORS:
HYDRAULIC RAM METHOD: THE ANCHOR SHOULD HAVE NO OBSERVABLE MOVEMENT AT THE APPLICABLE TEST LOAD FOR WEDGE AND SLEEVE TYPE ANCHORS, A PRACTICAL WAY TO DETERMINE OBSERVABLE MOVEMENT IS THAT THE WASHER UNDER THE NUT BECOMES LOOSE.
TORQUE WRENCH METHOD: THE APPLICABLE TEST TORQUE MUST BE REACHED WITHIN THE FOLLOWING LIMITS:
WEDGE OR SLEEVE TYPE: ONE-HALF (1/2) TURN OF THE NUT.
ONE-QUARTER (1/4) TURN OF THE NUT FOR THE 3/8 INCH SLEEVE ANCHOR ONLY.
 - TESTING SHOULD OCCUR 24 HOURS MINIMUM AFTER INSTALLATION OF THE SUBJECT ANCHORS.

CONCRETE NOTES

- ALL CONCRETE WORK SHALL CONFORM TO AC1 STANDARD 318 FOR REINFORCED CONCRETE AND CHAPTER 19A OF THE CBC 2007 EDITION.
- DESIGN MIXES SHALL BE PER CBC 1905A.
- CONCRETE SHALL BE NORMAL WEIGHT CONCRETE WITH AN ULTIMATE 28-DAY COMPRESSIVE STRENGTH OF AT LEAST 3,000 PSI AND SHALL BE MADE WITH TYPE I OR II CEMENT.
- KEY AND DOWEL POUR JOINTS AS SHOWN ON THE STRUCTURAL DRAWINGS ONLY UNLESS NOTED OTHERWISE.
- SET SCREEDS TO COMPENSATE FOR FORM AND SUPPORT SETTLEMENT.
- NO PIPES OR DUCTS SHALL BE EMBEDDED IN STRUCTURAL MEMBERS EXCEPT AS SHOWN ON THE STRUCTURAL DRAWINGS.
- ANCHOR BOLTS IN CONCRETE SHALL BE PER ASTM A-307 AND SHALL HAVE A MINIMUM EMBEDMENT IN ACCORDANCE WITH CBC, 2007 EDITION, TABLE 1911A.2.

REINFORCEMENT NOTES

- ALL REINFORCING BARS SHALL CONFORM TO CBC, 2007 EDITION, SECTION 1907A GRADE 60. BARS NO. 3 AND SMALLER MAY BE GRADE 40.
- WELDED WIRE FABRIC SHALL CONFORM TO CBC 2007 EDITION, SECTION 1907A.
- ALL REINFORCING SHALL BE ACCURATELY PLACED AND FIRMLY SUPPORTED AS REQUIRED BY THE ABOVE STANDARDS. REINFORCING SHALL HAVE THE FOLLOWING MINIMUM COVERAGE AND SHALL BE PLACED AS NEAR TO THE CONCRETE SURFACE AS THESE MINIMUMS WILL PERMIT UNLESS NOTED OR DETAILED OTHERWISE.
A. CONCRETE POURING AGAINST EARTH: 3".
B. FORMED CONCRETE IN CONTACT WITH EARTH OR WEATHER: 2".
C. SLABS, WALLS, JOISTS: 3/4".
D. BEAMS: 1-1/2".
E. COLUMNS (TO MAIN STEEL): 2", 1-1/2" TO THE REINFORCING BARS SHALL NOT BE WELDED EXCEPT WHERE SHOWN ON THE DRAWINGS. WHERE REINFORCING BARS ARE INDICATED TO BE WELDED, THEY SHALL BE OF MATERIAL SUITABLE FOR WELDING PER ASTM A-706, AND WELDED PER CBC 2007 EDITION, SECTION 1903A.4. WELDING RODS SHALL BE LOW HYDROGEN E-90 ELECTRODES.

EPOXY ADHESIVE INSTALLATION NOTES

- ADHESIVE ANCHORS SHALL CONSIST OF AN ALL-THREAD ANCHOR ROD, NUT, WASHER AND ADHESIVE CAPSULE.
- ANCHOR ROD SHALL BE FURNISHED AND INSTALLED WITH 45 DEGREE CHISEL POINT TO PROVIDE PROPER MIXING OF THE ADHESIVE COMPONENTS ANCHOR ROD SHALL BE MANUFACTURED TO MEET THE FOLLOWING REQUIREMENTS:
A. ASTM A36 (STANDARD CARBON STEEL ANCHOR).
B. ASTM A193/193M-10a GRADE B7 (TYPE 2).
C. AISI 304 OR AISI 316 STAINLESS STEEL MEETING THE MECHANICAL REQUIREMENTS OF ASTM F-593 (CONDITION CLU).

ADHESIVE CAPSULE SHALL CONSIST OF A DUAL CHAMBER FOIL CAPSULE. THE RESIN MATERIAL SHALL BE VITRE URETHANE METHACRYLATE.

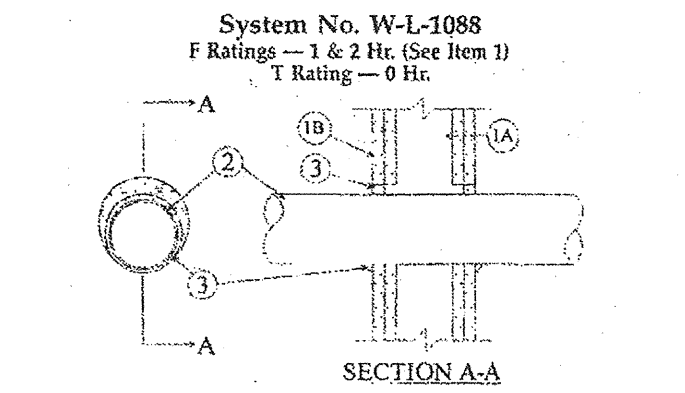
THE ADHESIVE ANCHORING SYSTEM SHALL BE THE HILTI HVA ANCHORING SYSTEM, CONSISTING OF THE HILTI HVO ADHESIVE CAPSULE AND THE HILTI HAS ANCHOR ROD OR THE APPROVED EQUIVALENT.

- INSTALLATION:
A. SET THE DRILL DEPTH GAUGE AND DRILL A HOLE TO THE REQUIRED HOLE DEPTH. IMPORTANT: CLEAN OUT DUST AND DEBRIS. USE COMPRESSED AIR OR VACUUM AT BOTTOM OF THE HOLE.
IMMEDIATELY REMOVE STANDING WATER.
B. INSERT APPROPRIATE DIAMETER HVA ADHESIVE CAPSULE INTO PRE-DRILLED HOLE IN BASE MATERIAL.
C. THREAD A NUT ON THE HAS ROD. PLACE A WASHER ON TOP OF THE FIRST NUT AND THREAD A SECOND NUT DOWN ON TOP OF THE WASHER. TIGHTEN THE TWO NUTS TOGETHER "LOCKING" THE WASHER BETWEEN THEM. THE TOP NUT SHOULD BE FLUSH WITH THE TOP OF THE ROD.
D. INSERT A SQUARE DRIVE SHAFT INTO THE HAMMER DRILL AND ATTACH THE PROPER IMPACT SOCKET. AT THE ROTARY HAMMER DRILL SETTING, ENGAGE THE TOP NUT OF THE HAS 200 ASSEMBLY WITH THE SOCKET AND DRIVE THE ROD DOWN THROUGH THE CAPSULES. STOP DRILL ROTATION IMMEDIATELY UPON REACHING BOTTOM OF HOLE.
E. DO NOT DISTURB OR LOAD THE SET ANCHOR BEFORE THE SPECIFIED CURING TIME ELAPSES.

- EPOXY ADHESIVE TYPE AND APPROVAL:
HILTI HIT HY-150 MAX, ICC ESR-1967 FOR MASONRY ONLY. TENSION TEST VALUES BASED ON 80% OF THE ICC ALLOWABLE FOR EACH SIZE AND EMBED ANCHOR.

NON-SHRINK GROUT INSTALLATION NOTES

- SURFACE PREPARATION:
CONCRETE SHALL BE CURED FOR A MINIMUM OF SEVEN DAYS. ALL SURFACES TO BE IN CONTACT WITH NON-SHRINK GROUT SHALL BE COMPLETELY DRY AND ENTIRELY FREE OF OIL

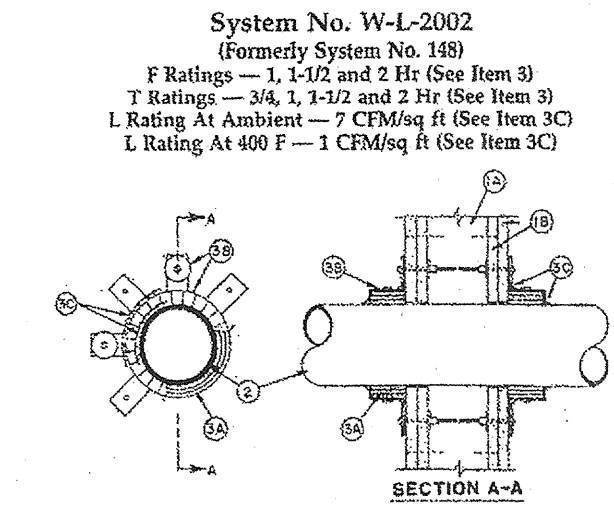


System No. W-L-1088
(Formerly System 1)
F Ratings — 1 Hr. (See Item 1)
T Rating — 0 Hr.

- Wall Assembly** — The 1 or 2 hr. fire-rated gypsum wallboard/stud wall assembly shall be constructed of the materials and in the manner described in the individual U300 or U400 Series Wall or Partition Design in the UL Fire Resistance Directory and shall include the following construction features:
 - Studs** — Wall framing may consist of either wood studs or steel channel studs. Wood studs to consist of nom 2 by 4 in. lumber spaced 16 in. O.C. with nom 2 by 4 in. lumber end plates and cross bracing. Steel studs to be min. 2x2 in. wide and spaced max 24 in. O.C.
 - Gypsum Board** — 5/8 in. thick, 4 ft wide with square or tapered edges. The gypsum wallboard type, thickness, number of layers, fastener type and sheet orientation shall be as specified in the individual U300 or U400 Series Design in the UL Fire Resistance Directory. Max diam of opening is 6-3/8 in. The hourly F rating of the firestop system is equal to the hourly fire rating of the wall assembly in which it is installed.
- Through Penetrant** — One metallic pipe, tubing or conduit to be installed either concentrically or eccentrically within the firestop system. The annular space between pipes, tubing or conduits and periphery of opening shall be min 0 in. (point contact) to max 5/8 in. Pipe, tubing or conduit to be rigidly supported on both sides of wall assembly. The following types and sizes of metallic pipes, tubing or conduits may be used:
 - Steel Pipe** — Nom 6 in. diam (or smaller) Schedule 10 (or heavier) steel pipe.
 - Iron Pipe** — Nom 6 in. diam (or smaller) cast or ductile iron pipe.
 - Copper Tubing** — Nom 6 in. diam (or smaller) Type M (or heavier) copper tubing.
 - Copper Pipe** — Nom 6 in. diam (or smaller) Regular (or heavier) copper pipe.
 - Conduit** — Nom 4 in. diam (or smaller) steel electrical metallic tubing, nom 4 in. diam (or smaller) galv steel conduit or nom 1 in. (or smaller) flexible steel conduit.
- Fill, Void or Cavity Material** — Sealant — Min 5/8 in. thickness of fill material within annulus. Flush with both surfaces of wall. Additional fill material installed such that a min 1/4 in. thick crown is formed around the penetrating item lapping 1/2 in. beyond the periphery of the opening.
HILTI CONSTRUCTION CHEMICALS, DIV OF HILTI INC. — FS-ONE Sealant
*Bearing the UL Classification Mark

2 FIRE STOP PENETRATION

SCALE: 3" = 1'-0" METALLIC - THROUGH WALL ASSEMBLY



System No. W-L-2002
(Formerly System 2)
F Ratings — 1, 1-1/2 and 2 Hr (See Item 3)
T Rating At Ambient — 7 CFM/ft (See Item 3C)
T Rating At 400 F — 1 CFM/ft (See Item 3C)

- Wall Assembly** — The 1 or 2 hr fire-rated gypsum wallboard/stud wall assembly shall be constructed of the materials and in the manner described in the individual U300 or U400 Series Wall or Partition Design in the UL Fire Resistance Directory and shall include the following construction features:
 - Studs** — Wall framing may consist of either wood studs or steel channel studs. Wood studs to consist of nom 2 by 4 in. (51 by 102 mm) lumber spaced 16 in. (406 mm) O.C. Steel studs to be min 3-5/8 in. (92 mm) wide by 1-3/8 in. (35 mm) deep channels spaced max 24 in. (610 mm) O.C.
 - Gypsum Board** — 5/8 in. (16 mm) thick, 4 ft (122 cm) wide with square or tapered edges. The gypsum wallboard type, thickness, number of layers, fastener type and sheet orientation shall be as specified in the individual U300 or U400 Series Design in the UL Fire Resistance Directory. Max diam of opening is 5 in. (128 mm).
- Nonmetallic Pipe or Conduit** — One nonmetallic pipe or conduit is centered within the firestop system. Pipe or conduit to be installed near center of stud cavity width and to be rigidly supported on both sides of wall. The following types and sizes of nonmetallic pipes or conduit may be used:
 - Nom 6 in. (152 mm) diam (or smaller) Schedule 40 solid-core polyvinyl chloride (PVC) pipe for use in closed (process or supply) or vented (drain, waste or vent) piping systems.
 - Nom 4 in. (102 mm) diam (or smaller) Schedule 40 cellular core polyvinyl chloride (PVC) pipe for use in closed (process or supply) or vented (drain, waste or vent) piping systems.
 - Nom 4 in. (102 mm) diam (or smaller) Schedule 40 solid-core acrylonitrile-butadiene-styrene (ABS) pipe for use in closed (process or supply) or vented (drain, waste or vent) piping systems.
 - Nom 4 in. (102 mm) diam (or smaller) Schedule 40 fire retardant polypropylene (FRPP) pipe for use in closed (process or supply) or vented (drain, waste or vent) piping systems.
 - Nom 4 in. (102 mm) diam (or smaller) Rigid Nonmetallic Conduit formed of PVC.
 - Nom 1 in. (25 mm) diam (smaller) Electrical Nonmetallic Tubing formed of PVC.
 - Nom 4 in. (102 mm) diam (or smaller) SDR13.5 chlorinated polyvinyl chloride (CPVC) pipe for use in closed (process or supply) piping systems.
 - Rigid Nonmetallic Conduit (RNC) and Electrical Nonmetallic Tubing (ENT) categories in UL Electrical Construction Materials Directory for names of manufacturers.
- Firestop System** — Installed symmetrically on both sides of wall assembly. The hourly F and T Ratings for the firestop system are dependent upon the type and size of nonmetallic pipe or conduit, the piping system type (closed systems such as process or supply piping or vented systems such as drain, waste or vent piping) and the hourly fire rating of the wall assembly in which it is installed, as shown in the following table.

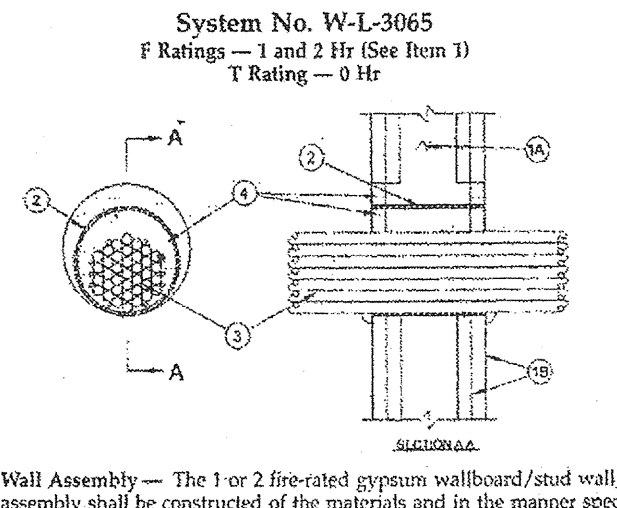
Pipe/Conduit Type	Nom Pipe Diam (in./mm)	Annulus In./mm	Firing System (a)	Wall Fire Rating	F Rating Hr	T Rating Hr
FRPP	1/2 to 1/2	0-3/16 to 0-5/16	V	2	1-1/2	1-1/2
FRPP/PB	1/2 to 1/2	0-5/16 to 0-5/16	C	2	2	2
ABS	1/2 to 1/2	0-3/16 to 0-5/16	C/V	1	1	3/4
ABS	1/2 to 1/2	0-3/16 to 0-5/16	C/V	2	1-1/2	1-1/2
PVC	1/2 to 1/2	0-3/16 to 0-5/16	C/V	1	1	1
PVC	1/2 to 1/2	0-3/16 to 0-5/16	C/V	2	2	2
FRPP	3/4 to 3/4	0-3/16 to 0-5/16	C/V	2	1-1/2	1-1/2
PVC	3/4 to 3/4	0-3/16 to 0-5/16	C/V	2	1-1/2	1-1/2

*Pipe covering material wrap required on pipe on both sides of wall.
(a) C = closed systems, V = vented systems.
The details of the firestop system shall be as follows:

- Fill, Void or Cavity Material** — **Wrap Strip** — Nom 1/8 in. (6 mm) thick Intumescent elastomeric material faced on one side with aluminum foil, supplied in 2 in. (51 mm) wide strips. Nom 2 in. (51 mm) wide strips tightly wrapped around nonmetallic pipe or conduit (foil side tapered) with the edges butted against the surface of the wall. Sufficient layers of wrap strip shall be installed to lap a min of 3/16 in. (5 mm) on the wall surface around the entire perimeter of the circular through opening. For nom 1/2 in. (13 mm) to nom 2 in. (51 mm) diam pipes or conduits, a min of one layer of wrap strip is required. For nom 2-1/2 in. (64 mm) and nom 3 in. (76 mm) diam pipes, a min of two layers of wrap strip is required. For nom 3-1/2 in. (89 mm) and nom 4 in. (102 mm) diam pipes, a min of three layers of wrap strip is required. For nom 5 and 6 in. (127 and 152 mm) diam, two ties (4 in. (102 mm) overall length) of three layers of wrap strip is required, with adjoining wrap strip layer edges between ties tightly butted. Each layer of wrap strip to be installed with butted seam, with butted seams in successive layers staggered. Wrap strip layers temporarily held in position using aluminum foil tape, steel wire tie or equivalent.
SM COMPANY — Type PS-16
- Steel Collar** — Nom 2 or 4 in. (51 or 102 mm) deep collar with 1-1/4 in. (32 mm) wide by 2 in. (51 mm) long anchor tabs and min 3/4 in. (19 mm) long tabs to retain wrap strip layers. Coils of steel 0.016 in. (0.41 mm) thick (No. 30 28 gauge) galv sheet steel available from wrap strip manufacturer. As an alternate, collar may be field-fabricated from min 0.016 in. (0.41 mm) thick (No. 30 28 gauge) galv sheet steel in accordance with instruction sheet supplied by wrap strip manufacturer.
Steel collar, with anchor tabs bent outward 90 deg, wrapped tightly around wrap strip layers with min 1 in. (25 mm) overlap at the seam. With steel collar anchor tabs pressed tightly against wall surface, compress collar around wrap strip layers using a min 1/2 in. (13 mm) wide by 0.025 in. (0.71 mm) thick stainless steel band clamp with worm drive tightening mechanism at the collar mid-height. As an alternate to the stainless steel band clamp, the steel collar may be compressed around nom 4 in. diam (or smaller) nonmetallic pipes using two min 1/8 in. (3.2 mm) dia steel bolts (nom 1/2 in. (13 mm) wide by 0.025 in. (0.71 mm) thick stainless steel band clamps or steel wires, collars may be secured by a means No. 10 by 1/2 in. (13 mm) long sheet metal screws installed in the vertical axis at the center of the 1 in. (25 mm) overlap along the perimeter joint of the collar. A min of three screws is required. Secure collar to wall surface with 3/16 in. (5 mm) diam steel toggle bolts in conjunction with min 1-1/2 in. (38 mm) diam steel washers. Three bolts, symmetrically located, required for 2 in. (51 mm) deep steel collar for nom 1/2 in. (13 mm) to nom 3 in. (76 mm) diam pipes. Four bolts, symmetrically located, required for 2 in. (51 mm) deep steel collar for nom 3-1/2 and 4 in. (89 and 102 mm) diam pipes. Five to seven bolts (every other anchor tab) required for 4 in. (102 mm) deep steel collar for nom 5 and 6 in. (127 and 152 mm) diam pipes. As a final step, bend retainer tabs 90 deg inward pipe to lock wrap strip layers in position.
- Fill, Void or Cavity Material** — **Caulk, Sealant or Putty** — Generous bead of caulk applied to outer perimeter of wrap strip at interface with wall surface and to perimeter of pipe or conduit at its egress from the wrap strip layers.
SM COMPANY — CP 25WB caulk and MPS-2c putty, IC 15WB caulk, FireDam 150c caulk, or FB-3000 WT sealant.
(Note: L Ratings apply only when CP 25WB caulk or FB-3000 WT sealant is used. CP 25WB not suitable for use with CPVC pipes.)
- Pipe Covering** — (Not Shown) — Nom 1 in. (25 mm) thick hollow cylindrical heavy density glass fiber units jacketed on the outside with an all service jacket. When required (see table), min 6 in. (152 mm) length of pipe covering installed around PVC pipe at its egress from steel collar on both sides of wall. Pipe covering secured to pipe with steel wire ties spaced max 4 in. (102 mm) O.C. Edge of pipe covering abutting steel collar to be sealed with a min 1/4 in. (6 mm) diam bead of caulk (Item C).
See Pipe and Equipment Covering — Materials (BRGL) category in Building Materials Directory for names of manufacturers. Any pipe covering material meeting the above specifications and bearing the UL Classification Marking with a Flame Spread Index of 25 or less and a Smoke Developed Index of 100 or less may be used.
- Firestop Device** — (Not shown) — As an alternate to Items A, B and C for nom 1-1/2, 2, 3 or 4 in. (38, 51, 76 or 102 mm) diam nonmetallic pipes, a firestop device consisting of a sheet-metal split collar lined with intumescent material and provided with steel clips for attachment may be used. Firestop device to be installed on both sides of wall in accordance with the accompanying installation instructions.
SM COMPANY — Types PFD 150, PFD 200, PFD 300, PFD 400
*Bearing the UL Classification Mark

3 FIRE STOP PENETRATION

SCALE: 3" = 1'-0" NONMETALLIC THROUGH WALL ASSEMBLY



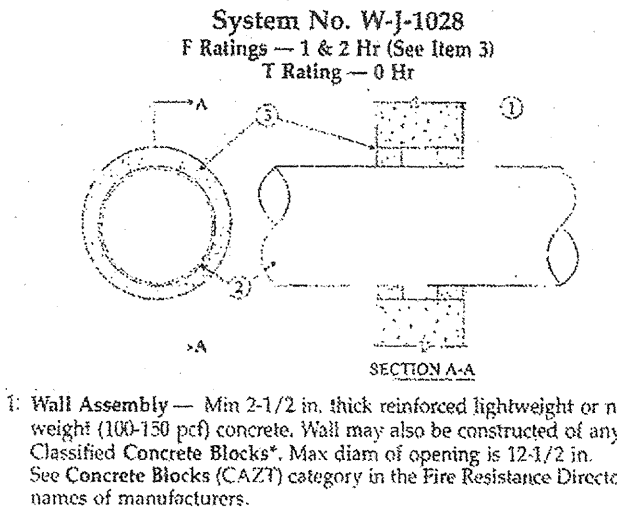
System No. W-L-3065
(Formerly System No. 189)
F Ratings — 1 and 2 Hr (See Item 1)
T Rating — 0 Hr

- Wall Assembly** — The 1 or 2 hr fire-rated gypsum wallboard/stud wall assembly shall be constructed of the materials and in the manner specified in the individual U300, U400 or V400 Series Wall and Partition Design in the UL Fire Resistance Directory and shall include the following construction features:
 - Studs** — Wall framing may consist of either wood studs or steel channel studs. Wood studs to consist of nom 2 by 4 in. lumber spaced 16 in. O.C. Steel studs to be min 2-1/2 in. wide and spaced max 24 in. O.C.
 - Gypsum Board** — Nom 5/8 in. thick gypsum board, with square or tapered edges. The gypsum wallboard type, thickness, number of layers, fastener type and sheet orientation shall be as specified in the individual U300, U400 or V400 Series Design in the UL Fire Resistance Directory. Max diam of opening is 5-1/2 in. when sleeve (Item 2) is employed. Max diam of opening is 4 in. when sleeve (Item 2) is not employed.
The F Rating of the firestop system is equal to the fire rating of the wall assembly.
- Metallic Sleeve** — (Optional) — Nom 4 in. diam (or smaller) steel electrical metallic tubing (EMT) or Schedule 5 (or heavier) steel pipe or min 0.016 in. thick (28 ga) galv steel sleeve installed flush with wall surfaces. The annular space between steel sleeve and periphery of opening shall be min 0 in. (point contact) to max 1 in. When Schedule 5 steel pipe or EMT is used, sleeve may extend up to 16 in. beyond the wall surface.
- Cables** — Aggregate cross-sectional area of cable in opening to be max 45 percent of the cross-sectional area of the opening. The annular space between the cable bundle and the periphery of the opening to be min 1/4 in. to max 3/4 in. Cables to be rigidly supported on both sides of the wall assembly. Any combination of the following types and sizes of copper conductor cables may be used:
 - Max 2/0 AWG with polyvinyl chloride (PVC) insulation and jacket.
 - Max 25 pair No. 24 AWG telephone cable with PVC insulation and jacket.
 - Type RCU coaxial cable with polyethylene (PE) insulation and PVC jacket having a max outside diameter of 1/2 in.
 - Multiple fiber optical communication cables jacketed with PVC and having a max OD of 5/8 in.
- Through Penetrating Products** — Max three copper conductor No. 8 AWG Metal-Clad Cable + APC CABLE SYSTEMS INC.
F. Max 5/8 in. (with ground for smaller) No. 8 AWG copper conductor cable with PVC insulation and jacketing.
- Fill, Void or Cavity Material** — Sealant — Fill material applied within the annulus, flush with each end of the steel sleeve or wall surface. Fill material installed symmetrically on both sides of the wall. A min 5/8 in. thickness of sealant is required for the 1 or 2 hr F Rating. An additional 1/2 in. diam bead of fill material shall be applied around the perimeter of sleeve on both sides of the wall when sleeve extends beyond surface of wall.

HILTI CONSTRUCTION CHEMICALS, DIV OF HILTI INC. — CPW015, CPW05 or FS-One Sealant
*Bearing the UL Classification Mark

4 FIRE STOP PENETRATION

SCALE: 3" = 1'-0" CABLES THROUGH WALL ASSEMBLY



System No. W-J-1028
F Ratings — 1 and 2 Hr (See Item 3)
T Rating — 0 Hr

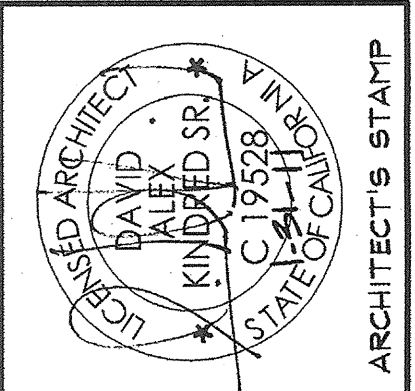
- Wall Assembly** — Min 2-1/2 in. thick reinforced lightweight or normal weight (100-150 pcf) concrete. Wall may also be constructed of any UL Classified Concrete Block. Max diam of opening is 12-1/2 in. See Concrete Block (CA-2) category in the Fire Resistance Directory for names of manufacturers.
- Through Penetrants** — One metallic pipe, conduit or tubing to be centered within the firestop system. The annular space between pipe, conduit or tubing and periphery of opening shall be min 1/2 in. to max 7/8 in. Pipe, conduit or tubing to be rigidly supported on both sides of wall assembly. The following types and sizes of metallic pipes, conduits or tubing may be used:
 - Steel Pipe — Nom 10 in. diam (or smaller) Schedule 10 (or heavier) steel pipe.
 - Conduit — Nom 4 in. diam (or smaller) steel electrical metallic tubing or nom 6 in. diam (or smaller) Type L (or heavier) copper tubing.
 - Copper Tubing — Nom 4 in. diam (or smaller) Type L (or heavier) copper tubing.
 - Copper Pipe — Nom 4 in. diam (or smaller) Regular (or heavier) copper pipe.
- Fill, Void or Cavity Material** — Sealant — Min 5/8 in. or 1-1/4 in. thickness of fill material applied within the annulus, flush with both surfaces of wall for 1 hr and 2 hr fire-rated walls, respectively.
HILTI CONSTRUCTION CHEMICALS, DIV OF HILTI INC. — FS-ONE Sealant
*Bearing the UL Classification Mark

5 PENETRATION FIRESTOP

SCALE: 3" = 1'-0" PIPE PASSING THRU CMU

1 NOT USED

SCALE: NONE



ARCHITECT'S STAMP
ENGINEER'S STAMP

Oak Park Unified School District
Brookside Elementary School
Modernization

KPI Architects Inc.
650 East Parkridge Avenue, Suite 105
Corona, California 92709-1092
Phone: (951) 364-6381 Fax: (971) 493-2059
barnhart, inc.
A HEERY INTERNATIONAL COMPANY

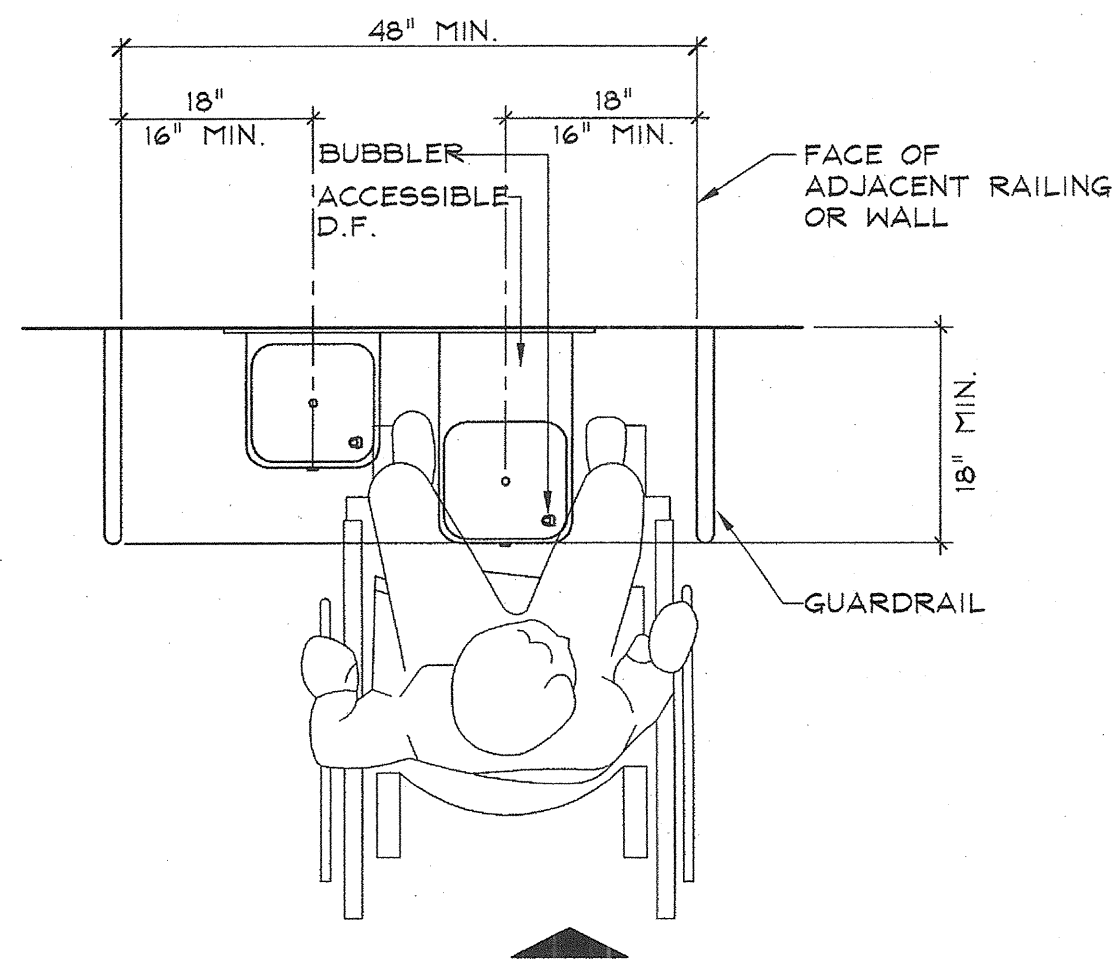
PROJECT NO.: 234800 DATE: 09-02-09

FIRE STOP PENETRATIONS

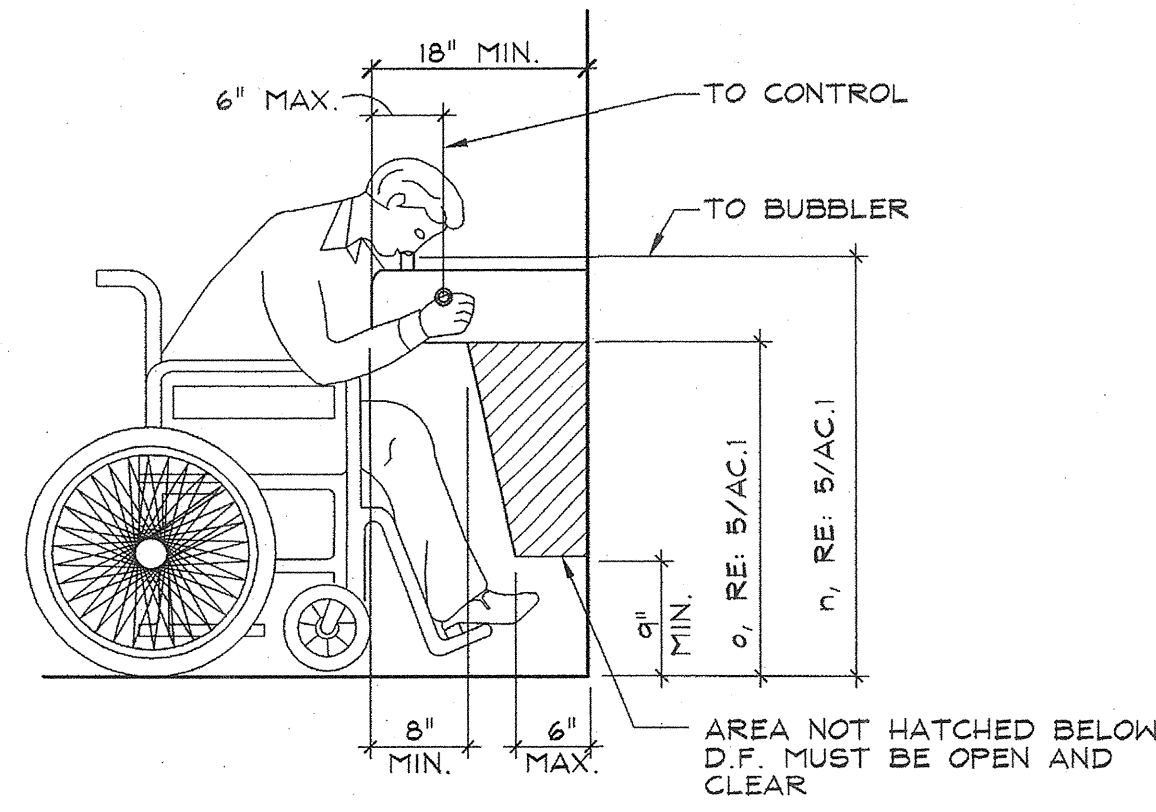
13-01R

A0.2b

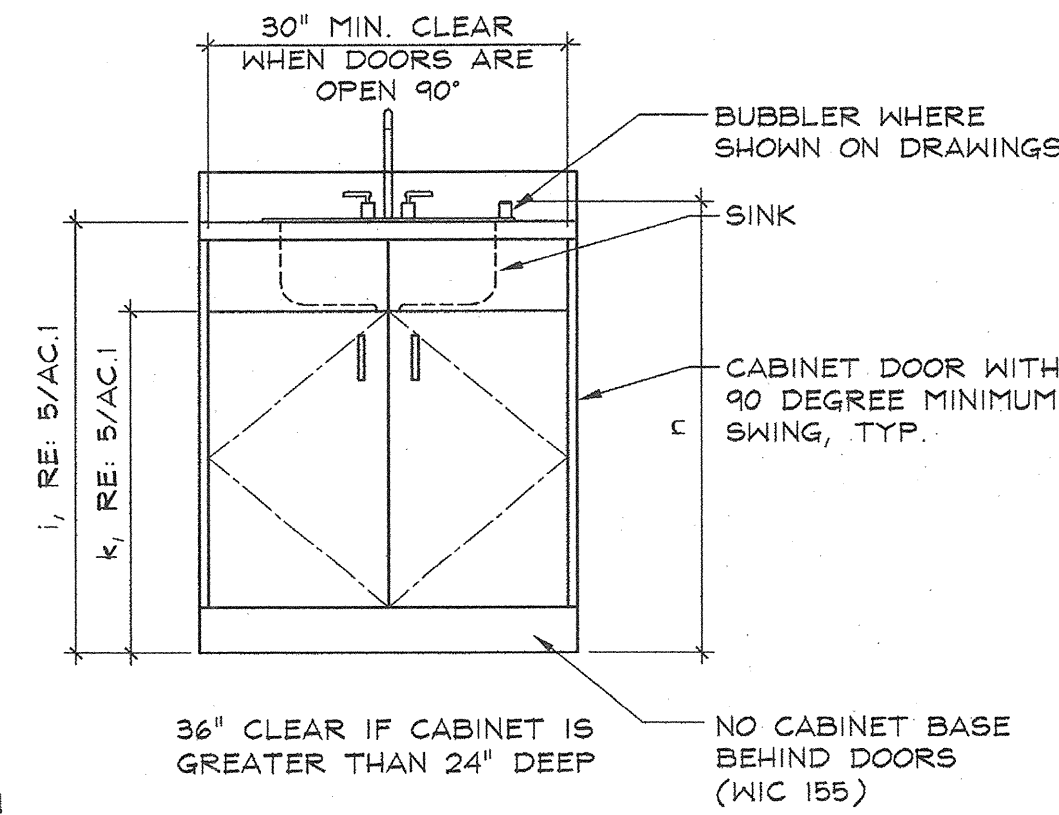
IDENTIFICATION STAMP
DIV. OF THE STATE ARCHITECT
APPL 03-113415
AC. FLS. SS. W. DATE: 10/10/10
DSA STAMP



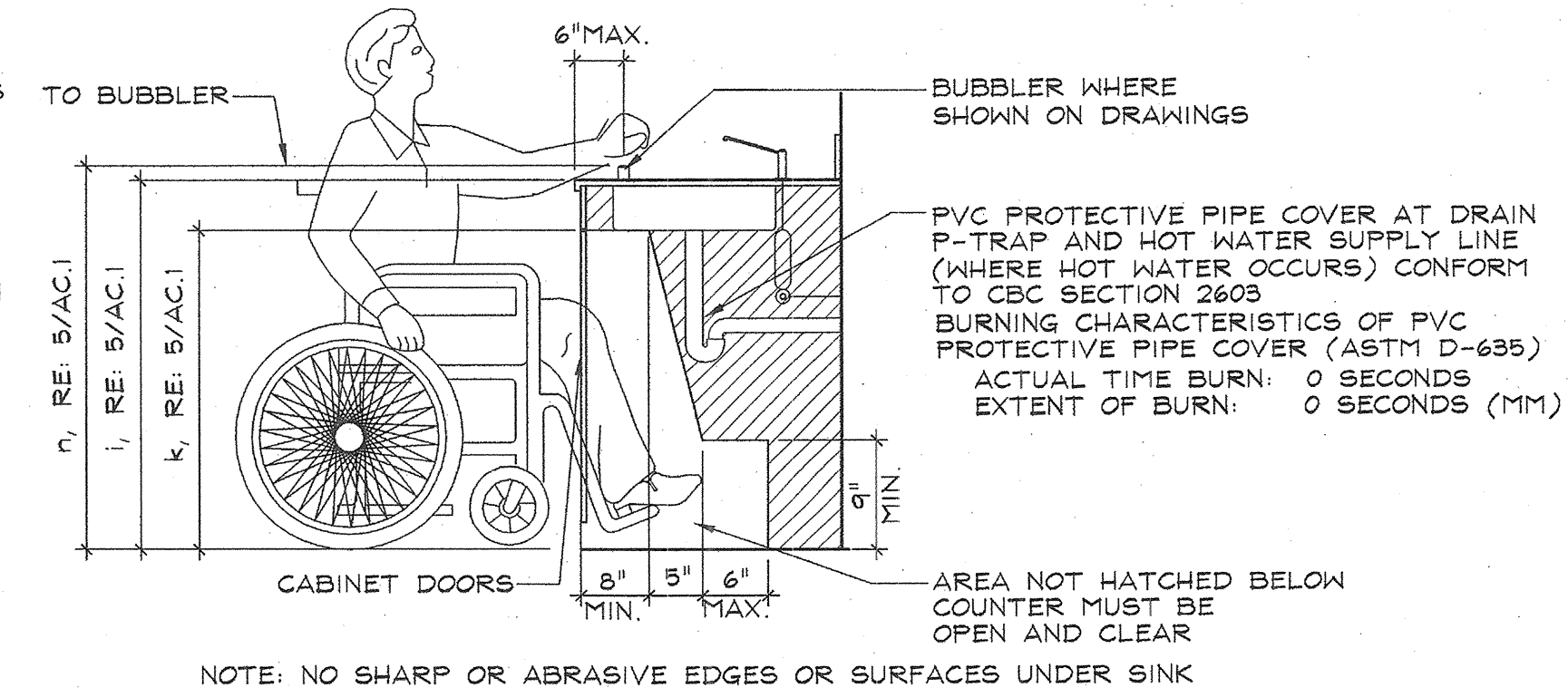
1 ACCESSIBLE DRINKING FOUNTAIN
SCALE: 3/4" = 1'-0"



ELEVATION

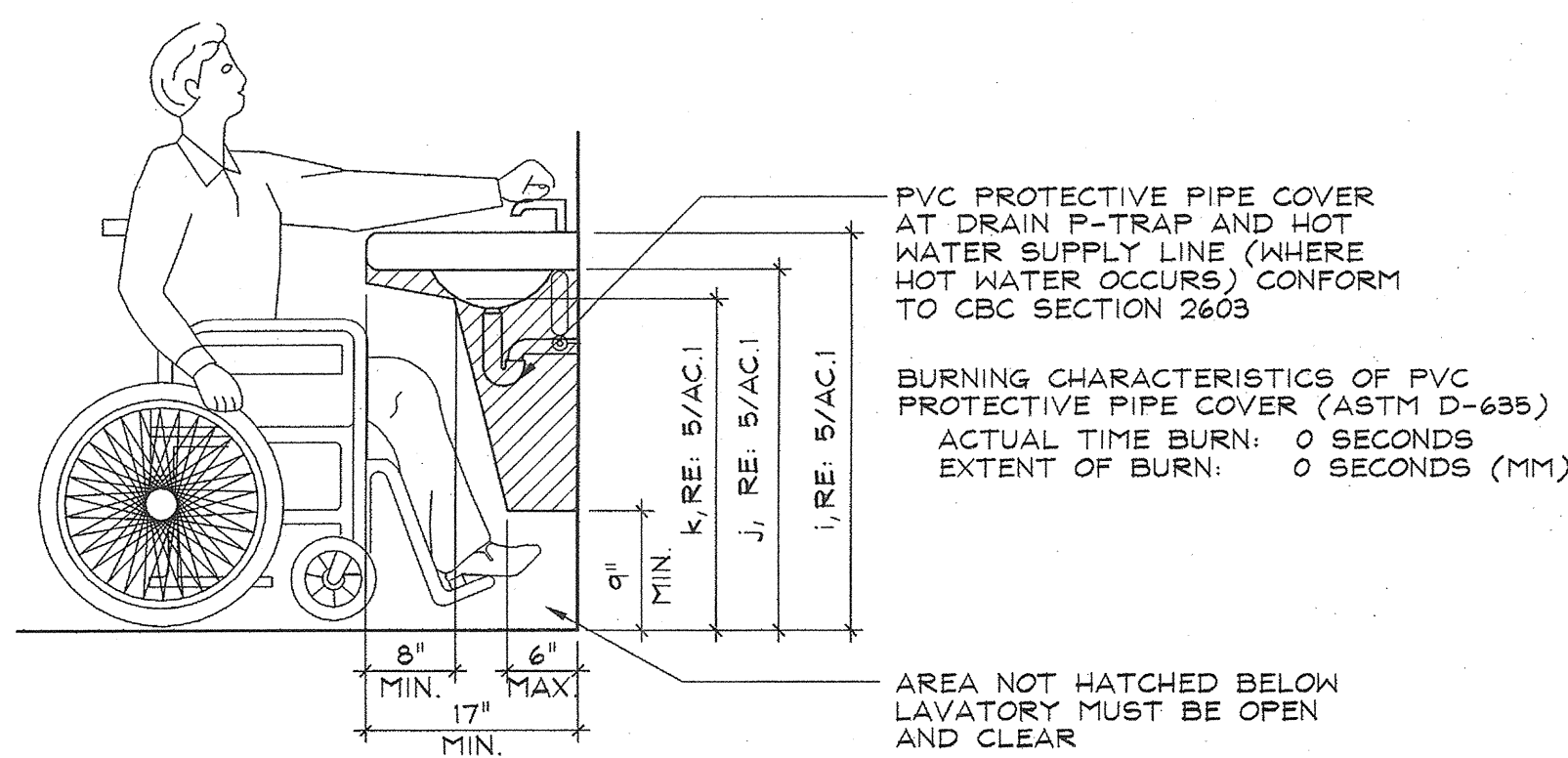


FRONT ELEVATION



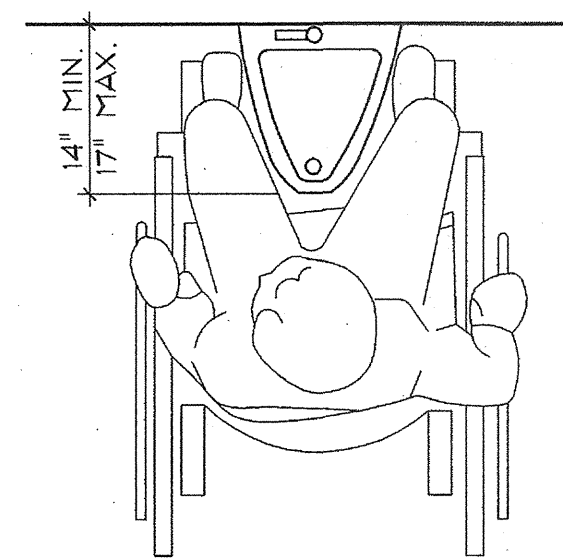
SECTION

2 ACCESSIBLE SINK
SCALE: 3/4" = 1'-0"



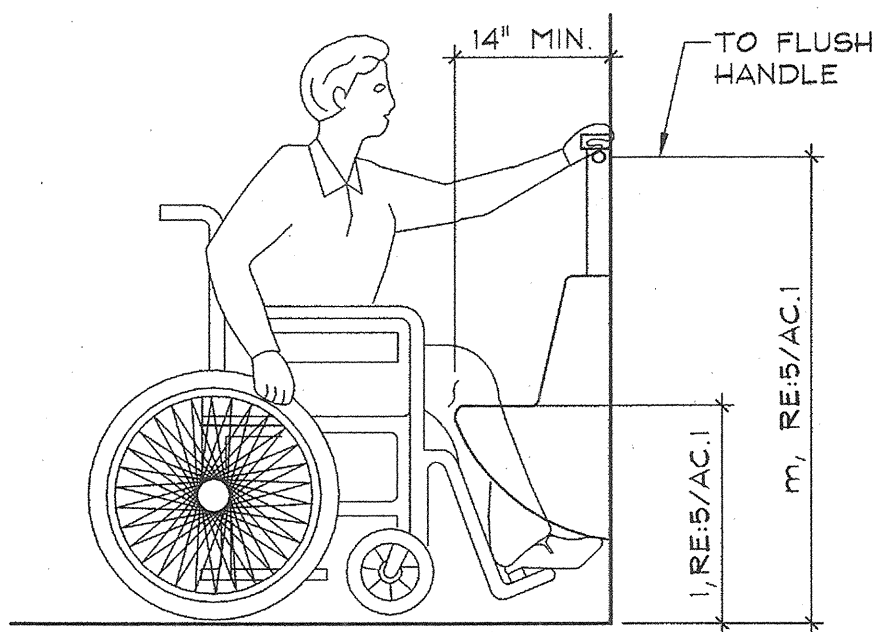
ELEVATION

3 ACCESSIBLE LAVATORY
SCALE: 3/4" = 1'-0"



PLAN

4 ACCESSIBLE URINAL
SCALE: 3/4" = 1'-0"



ELEVATION

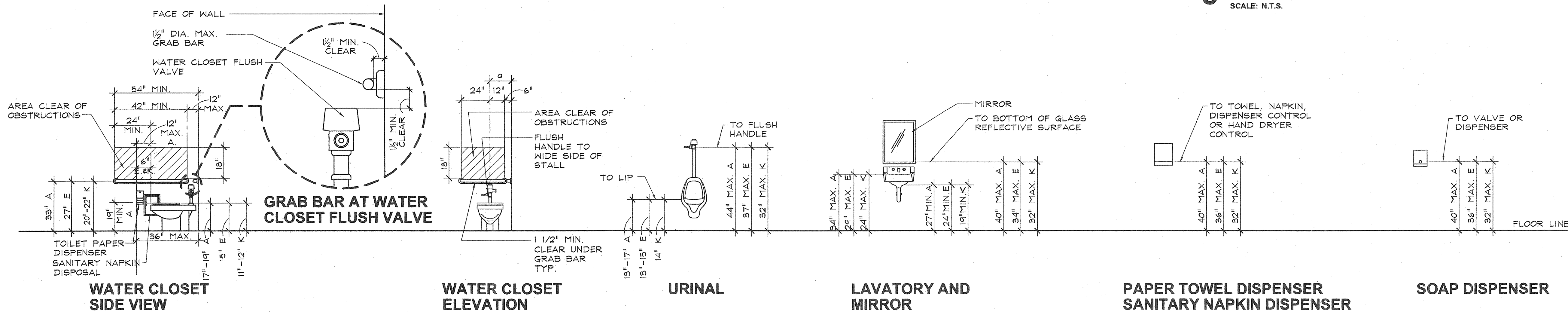
Alternative Dimensions for Children's Use

A = Adult Dimensions (age 12 and over).
E = Elementary dimensions.
K = Kindergarten and pre-school dimensions.
FED = ADAAG dimensions for children age 12 and younger, shown for reference only.

ALTERNATIVE DIMENSIONS	A (Inches)	E (Inches)	K (Inches)	FED Children
a Toilet centering from wall (Absolute)	18	15	12	12-18
b Toilet seat height/dimensions to top of seat	17-19	15	11-12**	11-17
c Grab bar height (centerline)	33	27	20-22	18-27
d Toilet paper above floor (centerline)	19 min.	-	-	14-19
e Toilet paper in front of seat	12 max.	6 max.	6 max.	-
f Napkin disposal in front of toilet	12 max.	12 max.	N/A	-
g Dispenser height	40 max.	36 max.	32 max.	29-44
h Mirror height (to bottom of glass)	40 max.	34 max.**	32 max.	34 max.
i Lavatory/sink top height	34 max.	29 max.	24 max.	31 max.
j Lavatory apron clearance	29 min.	-	-	24 min*
k Lavatory/sink knee clearance	27 min.	24 min.	19 min.	24 min*
l Urinal lip height	13-17	13-15	14±1/3 min.	-
m Urinal, toilet flush handle height	44 max.	37 max.	32 max.	36 max.
n Drinking fountain bubbler height	36 max.	32 max.	30 max.	30 max.
o Drinking fountain knee clearance	27 min.	24 min.	22 min.	-
p Ramp/stair handrail height	34-38	27***	22***	28 max.
q Fixed or built-in seating, table top height	28-34	-	-	26-30*
r Fixed or built-in seating and table knee clearance	27 min.	24 min.	-	24 min*
s Forward reach range (high)	48 max.	-	-	36-44
t Side reach range (high)	54 max.	-	-	36-44
u Forward reach range (low)	15 min.	-	-	16-20
v Side reach range (low)	9 min.	-	-	16-20

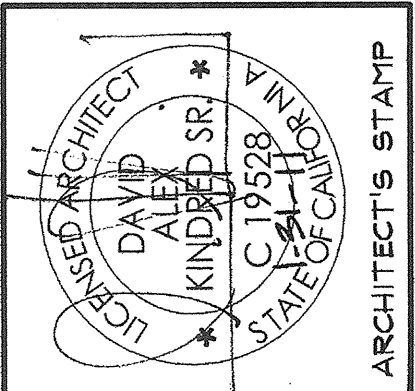
* No ADAAG requirement if element is used primarily by children ages 5 and younger and if clear floor and parallel approach is provided.
** Change from CBC due to more restrictive federal standard (see GC 4450(b) and CBC Table 1115B-1).
*** In addition to adult rail

5 MOUNTING HEIGHTS AND CLEARANCES
SCALE: N.T.S.



- NOTES:
1. WATER CLOSET ELEVATION AND SIDE VIEW APPLIES TO ACCESSIBLE AND SEMI-AMBULATORY WATER CLOSETS.
2. CONTINUOUS PAPER FLOW REQUIRED ON TOILET PAPER DISPENSER.
3. REFER TO SIAC.1 FOR "A", "E" AND "K" VALUES

6 MOUNTING HEIGHTS AND CLEARANCES
SCALE: NONE



ENGINEER'S STAMP

OAK PARK UNIFIED SCHOOL DISTRICT BROOKSIDE ELEMENTARY SCHOOL MODERNIZATION

Oak Park UNIFIED SCHOOL DISTRICT

KPI Architects Inc.
650 East Parkside Avenue Suite 105
Corona, California 92719-1692
Phone: (800) 366-6381 Fax: (877) 493-2059

barnhart, inc.
A HEERY INTERNATIONAL COMPANY

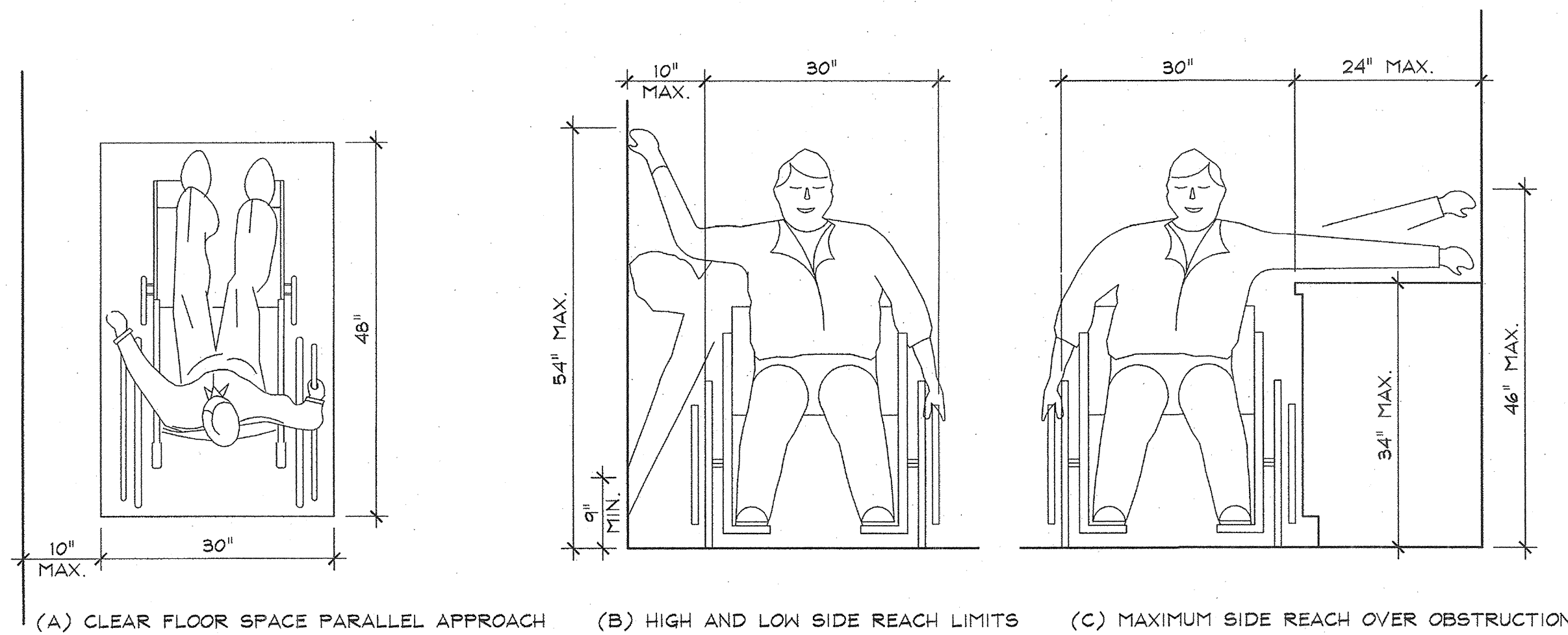
PROJECT NO.: 234800 DATE: 09-02-09

GENERAL ACCESSIBILITY REQUIREMENTS

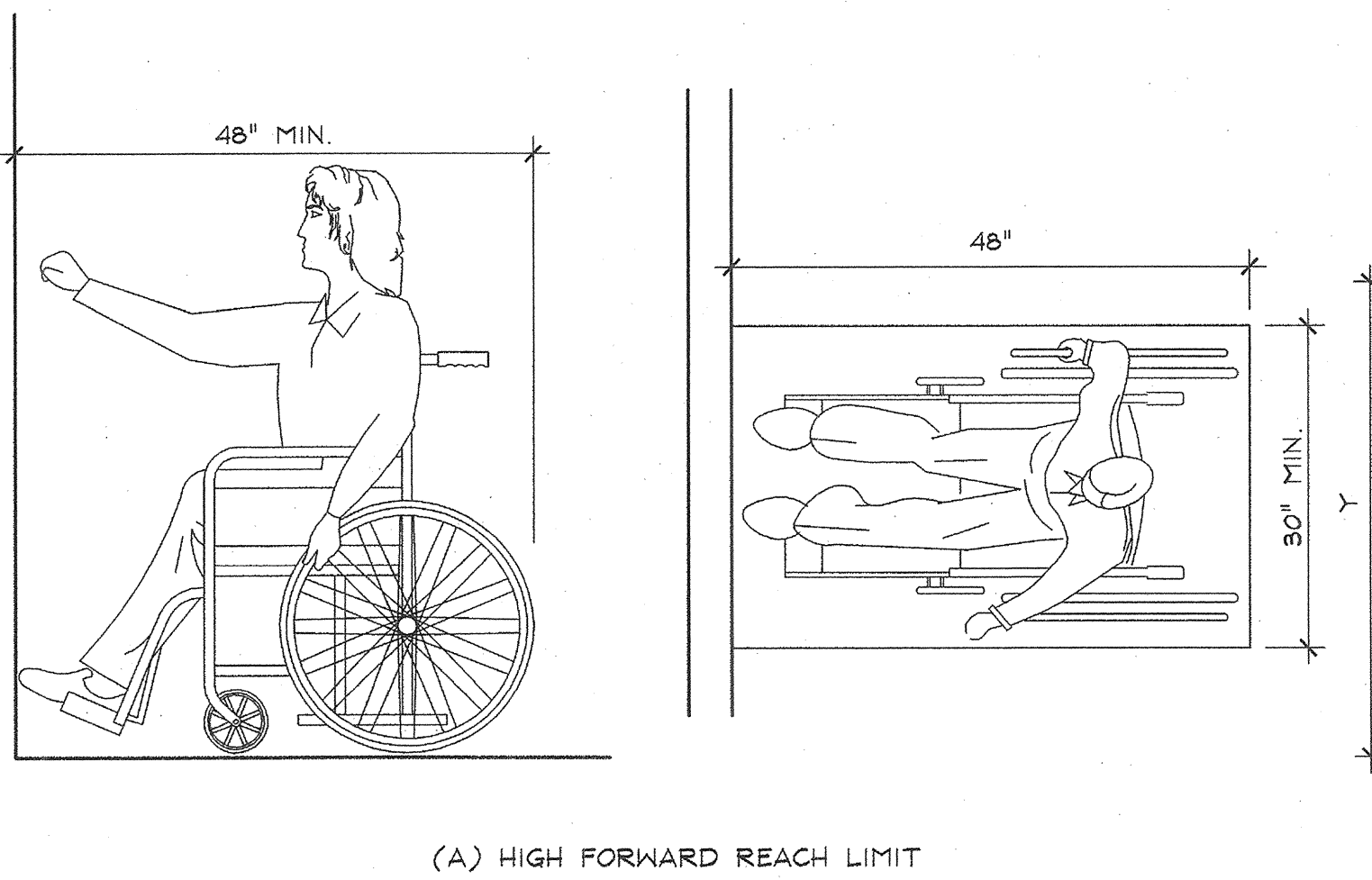
13-01R

AC.1

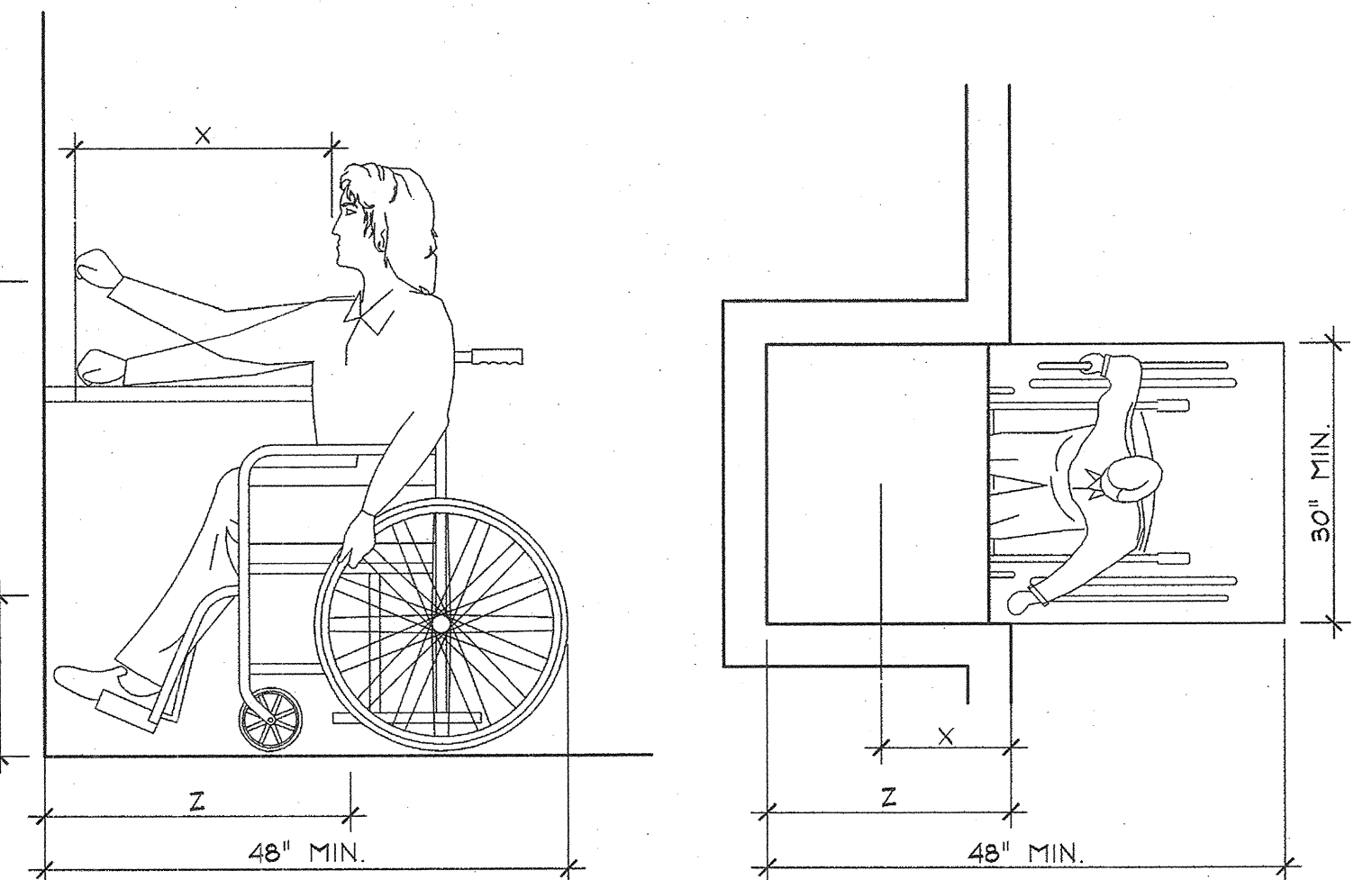
IDENTIFICATION STAMP
DIV. OF THE STATE ARCHITECT
APPL 03-113415
AC FLS. & SS. M.
DATE: 10/20/10
DSA STAMP



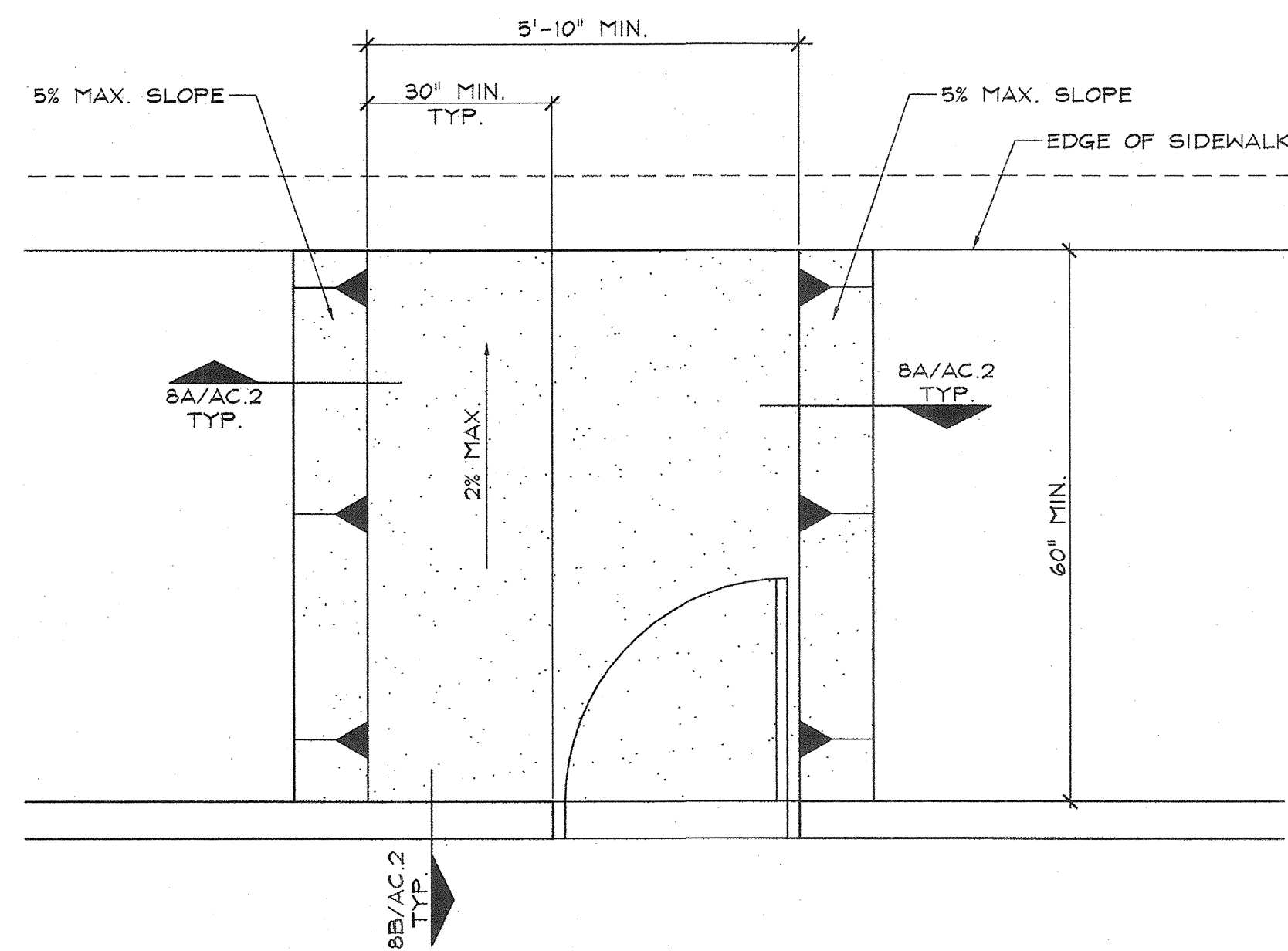
1 SIDE REACH ACCESSIBILITY REQUIREMENTS
SCALE: NONE



2 FRONT REACH ACCESSIBILITY REQUIREMENTS
SCALE: NONE

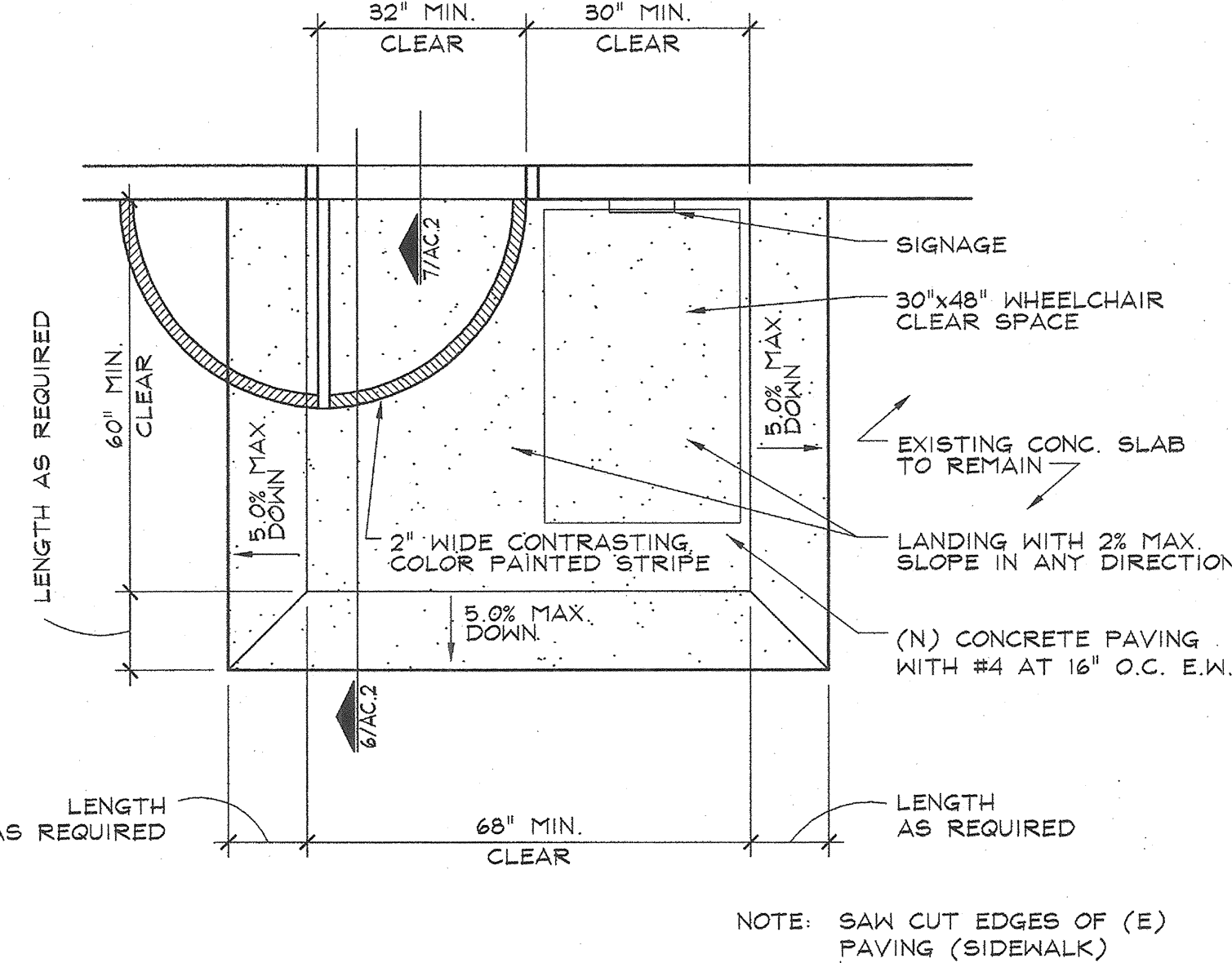


NOTE:
X SHALL BE LESS THAN OR EQUAL TO 25 INCHES. Z SHALL BE GREATER THAN OR EQUAL TO X. WHEN X IS LESS THAN 20 INCHES, THEN Y SHALL BE 48 INCHES MAXIMUM. WHEN X IS 20 TO 25 INCHES, THEN Y SHALL BE 44 INCHES MAXIMUM.

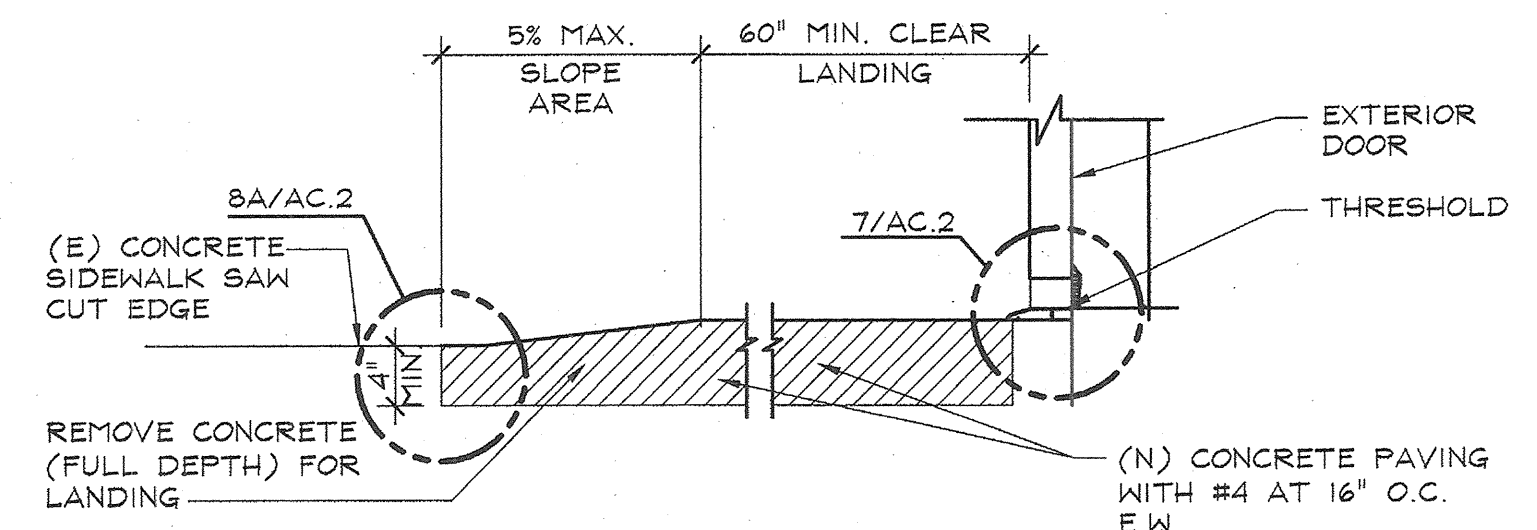


3 NOT USED
SCALE:

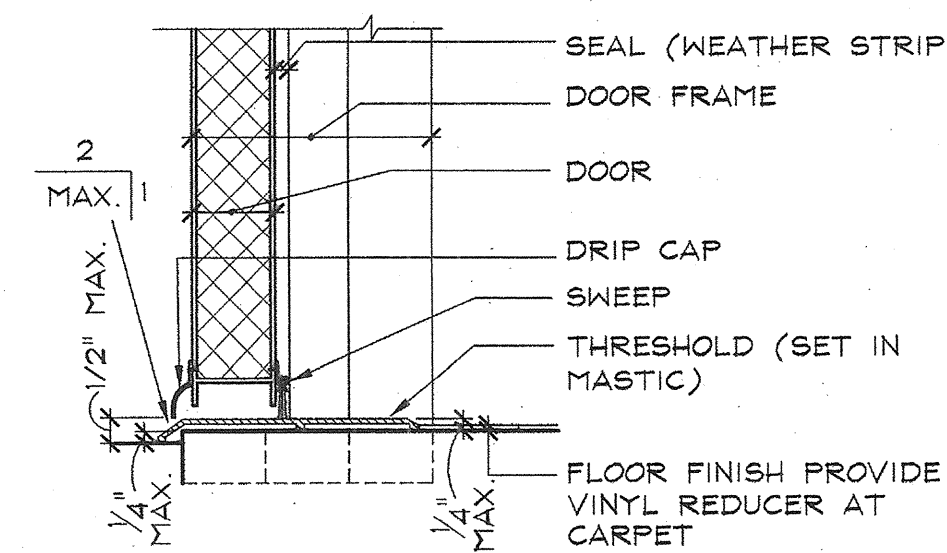
4 EXTERIOR LANDING
SCALE: 1/2" = 1'-0"



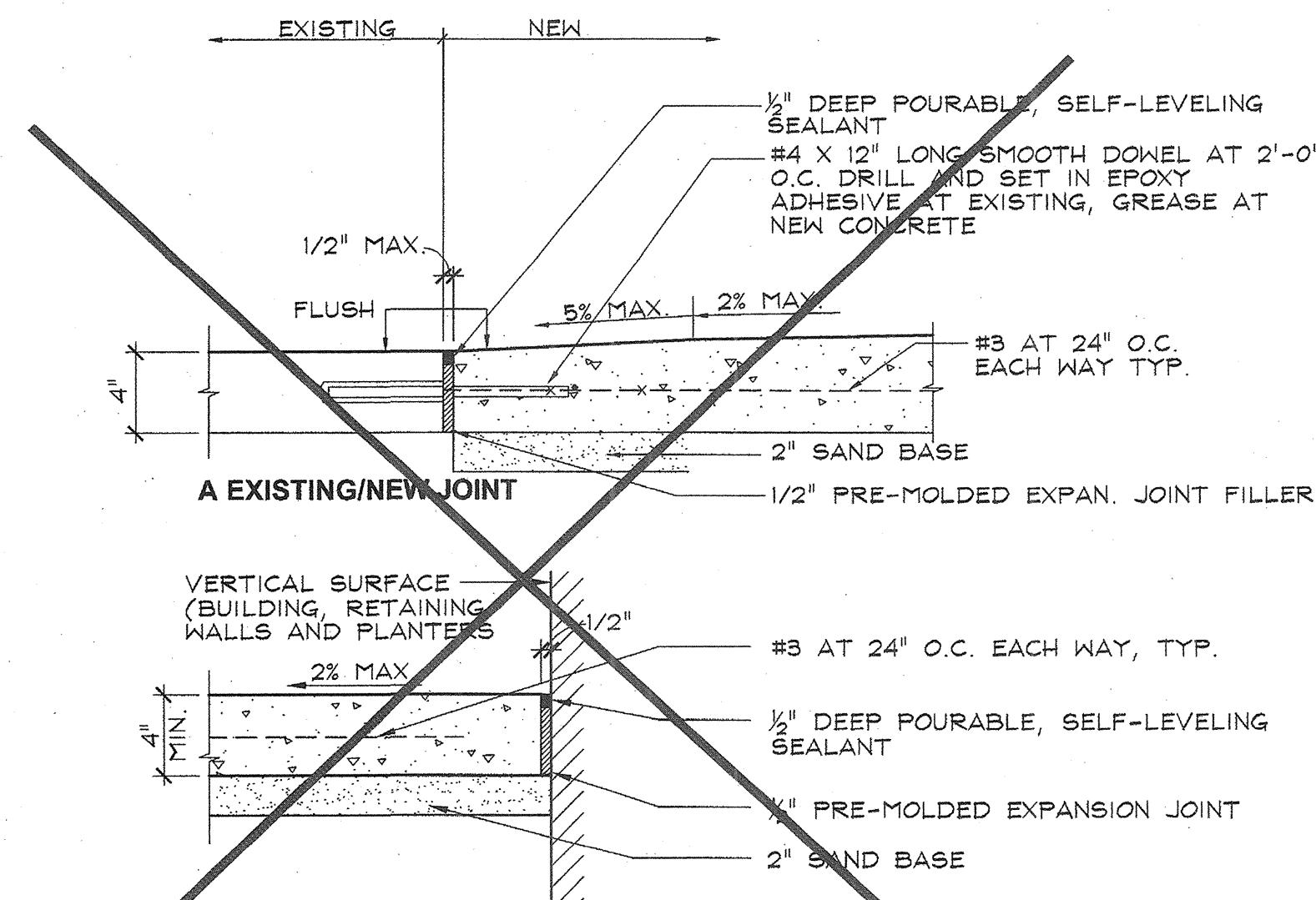
5 TYPICAL EXTERIOR LANDING
SCALE: 1/2" = 1'-0"
DETAIL TO BE USED WHERE (E) THRESHOLD IS 1/2" OR GREATER



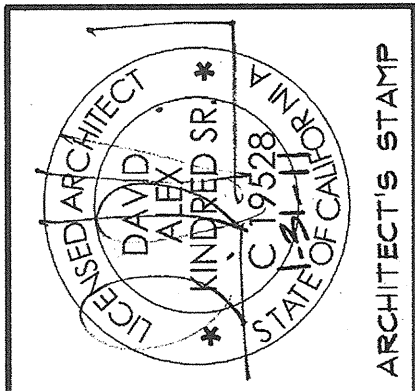
6 SECTION AT LANDING
SCALE: 1 1/2" = 1'-0"
DETAIL TO BE USED WHERE (E) THRESHOLD IS 1/2" OR GREATER



7 THRESHOLD SECTION
SCALE: 3" = 1'-0"



8 SECTION AT NEW LANDING
SCALE: 1 1/2" = 1'-0"

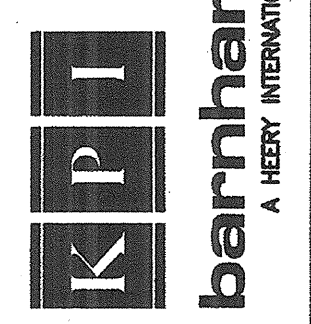


ARCHITECT'S STAMP

OAK PARK UNIFIED SCHOOL DISTRICT
BROOKSIDE ELEMENTARY SCHOOL
MODERNIZATION



KPI Architects Inc.
650 La Grana, Suite 105
Corona, California 92709-1092
Phone: (800) 365-6381 Fax: (877) 493-2059

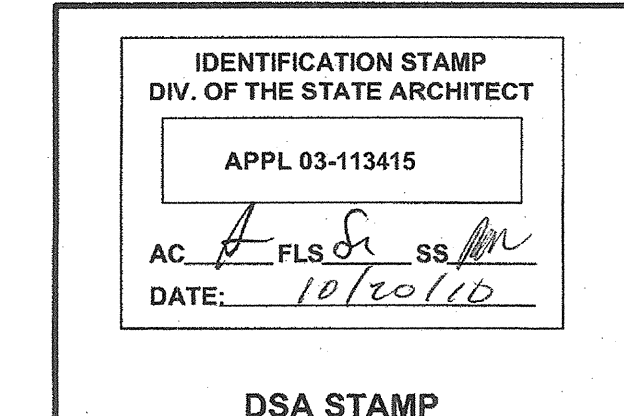


PROJECT NO.: 234800 DATE: 09-02-09

PLUMBING FIXTURES AND TOILET ACCESSORIES ACCESSIBILITY REQUIREMENTS 2

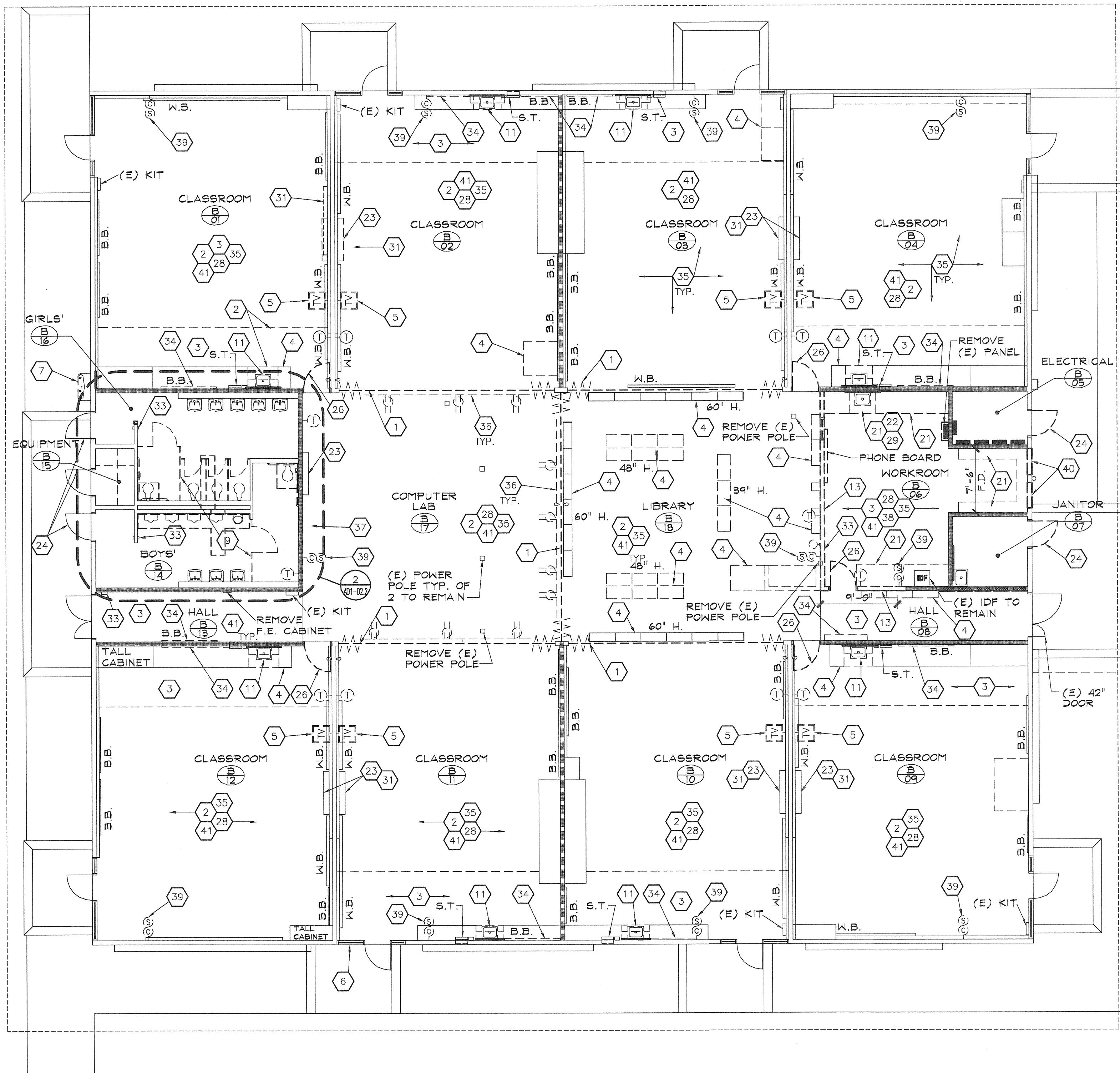
13-01R

AC.2

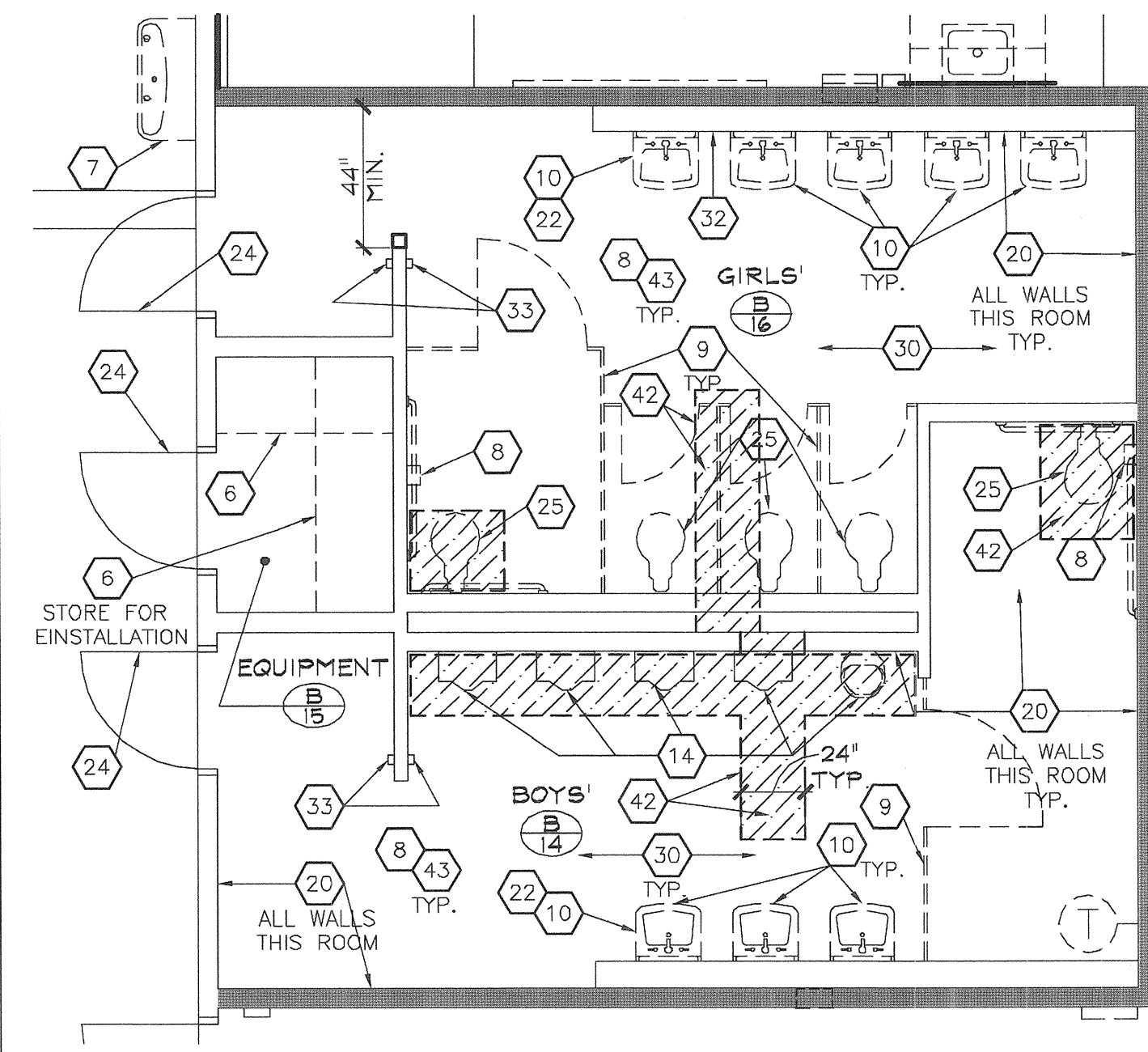


DSA STAMP

Oak Park Unified School District Brookside Elementary School Modernization Drawings/234800-AC.2.dwg, 10/16/2010 3:05:29 PM, mcooper



1 DEMOLITION FLOOR PLAN
SCALE: 1/8" = 1'-0"
BUILDING B
REFER TO D2.4



2 ENLARGED DEMOLITION TOILET PLAN
SCALE: 1/4" = 1'-0"
BUILDING B



SALVAGED ITEMS/TO BE REINSTALLED BY CONTRACTOR

- E. KIT = EMERGENCY KIT
- W.B. = WHITE BOARD
- B.B. = BULLETIN BOARD
- S.T. = SOAP AND TOWEL DISPENSER
- DOOR AND HARDWARE
- FIRE EXTINGUISHERS

KEYNOTES: NOTE: NOT ALL KEYNOTES MAY BE USED ON THIS SHEET.

1. REMOVE EXISTING FOLDING PANEL PARTITION (ABATE)
2. REMOVE EXISTING CARPETING AND VCT AND MASTIC UNDERNEATH CARPETING AND MASTIC
3. REMOVE EXISTING VCT FLOOR TILE (ABATE)
4. DETACH EXISTING CASEWORK, PROTECT AND STORE FOR LATER REINSTALLATION CONTRACTOR TO INFILL OPENINGS
5. REMOVE EXISTING TV AND BRACKET AND TERMINATE POWER AND CABLE IN WALL
6. REMOVE EXISTING SHELVEING
7. REMOVE EXISTING DRINKING FOUNTAIN AND PROTECT CERAMIC TILE WALL FINISH
8. REMOVE EXISTING TOILET ACCESSORY
9. REMOVE EXISTING TOILET PARTITION AND DOOR
10. REMOVE EXISTING LAVATORY
11. REMOVE EXISTING SINK AND CABINET TO ALLOW FOR NEW ADA COMPLIANT SINK AND CABINET
12. NOT USED
13. REMOVE EXISTING WALL
14. REMOVE EXISTING URINAL
15. DEMOLITION EXISTING COUNTER FOR MODIFICATION TO ADA COMPLIANT WORK STATION
16. NOT USED
17. NOT USED
18. NOT USED
19. NOT USED
20. REMOVE EXISTING CERAMIC TILE MORTAR BED AND VAPOR BARRIER TO WOOD STUD
21. REMOVE EXISTING CASWORK
22. REMOVE EXISTING PLUMBING FIXTURES, CAP LINES
23. REMOVE AND PROTECT EXISTING SMARTBOARD, STORE FOR REINSTALLATION (BY DISTRICT)
24. REMOVE EXISTING DOOR AND HARDWARE. CONTRACTOR TO FIELD VERIFY EXISTING FRAME DIMENSIONS PRIOR TO ORDERING NEW DOORS
25. REMOVE EXISTING TOILET
26. REMOVE EXISTING DOOR AND HARDWARE, PROTECT EXISTING FRAME, ADD HEADER BAR TO EXISTING FRAME FOR INSTALLATION OF NEW TRANSOM WINDOW ABOVE. CONTRACTOR SHALL FIELD VERIFY EXISTING FRAME DIMENSIONS PRIOR TO ORDERING NEW DOOR, RE: 4/AD1-A8.1 FOR NEW DOOR HEAD
27. REMOVE EXISTING FIXTURE
28. REMOVE EXISTING PROJECTOR SCREEN (TURN OVER TO DISTRICT)
29. REMOVE EXISTING SINK
30. REMOVE ALL SURFACE ACCESSORIES AND REINSTALL AT FINISH (TURN OVER TO DISTRICT)
31. REMOVE ALL PROJECTION SCREENS AND MOUNTING BOARDS (TURN OVER TO DISTRICT)
32. NOT USED
33. REMOVE FIRE ALARM DEVICES FOR REINSTALLATION
34. REMOVE AND STORE FOR REINSTALLATION ALL MARKER BOARD AND BULLETIN BOARDS, TYP. (ONLY ON SINK WALL)
35. REMOVE EXISTING WALL BASE THROUGHOUT
36. REMOVE ALL EXISTING WIRE MOLD THROUGHOUT, PROTECT CABLE FOR RE-USE
37. NOT USED
38. REMOVE FIRE SPRINKLER AND CAP ABOVE CEILING IN WORK ROOM (B-06)
39. REMOVE EXISTING SINK
39. REMOVE ALL SURFACE ACCESSORIES AND REINSTALL AT FINISH (TURN OVER TO DISTRICT) RE: 9/AD1-A6.62
40. SAW CUT / REMOVE PORTION OF WALL FOR NEW WINDOW OR DOOR
41. REMOVE ALL EXISTING FIRE EXTINGUISHERS AND REINSTALL UPON COMPLETION OF WORK AT LOCATIONS SHOWN ON PLANS
42. SAWCUT AND REMOVE CONCRETE SLAB FOR UNDER SLAB PIPING WORK. MODIFY EXISTING CONCRETE CURB AS REQUIRED IN THIS AREA. REMOVE FLOOR DRAIN AND WASTE LINE PER AD1-PD2.2, AD1-P2.2a
43. REMOVE ALL FLOOR CERAMIC TILE AND MORTAR BED. TYPICAL AT ALL FLOOR AREAS IN ROOM

BUILDING B INTERIOR GENERAL SCOPE OF WORK

- A. REMOVE EXISTING DEMOUNTABLE AND FOLDING PANEL PARTITIONS.
- B. REMOVE EXISTING FLOOR COVERINGS
- C. DETACH AND STORE EXISTING CASEWORK FOR REINSTALLATION.
- D. REMOVE DOMESTIC WATER LINE PIPES (NON-COPPER OR GALVANIZED) THROUGHOUT BUILDING.
- E. REMOVE WATER LINE PIPE SUPPORTS THROUGHOUT.
- F. DEMOLITION OF WALLS AS NECESSARY FOR REMOVAL OF EXISTING GALVANIZED/NEW COPPER WATER LINE PIPES.
- G. DEMOLISH / REMOVE ALL EXISTING DUCTWORK / SUPPORTS AND DIFFUSER GRILLES
- H. REMOVE ALL EXISTING SUBSTRATE BEHIND OR UNDERNEATH CERAMIC WALL / FLOOR.
- I. REPLACE ALL EXISTING ELECTRICAL WALL RECEPTACLES WITH NEW (TYP.).
- J. REMOVE EXISTING WALL BASE. CONTRACTOR TO ENSURE PROPER REMOVAL AS TO NOT DAMAGE EXISTING SUBSTRATE.
- K. REMOVE EXISTING FIBERGLASS DUCTING / SUPPORTS THROUGHOUT BUILDING
- L. CONTRACTOR RESPONSIBLE TO REPAIR ANY DRY ROTTED/DAMAGED WOOD SILLS.
- M. PROTECT FIRE ALARM IN PLACE
- N. ELECTRICAL CONTRACTOR WILL NEED TO REMOVE COIL AND LABEL ALL DATA CABLES. NOT DEMOLITION CONTRACTOR
- O. REMOVE FOR PAINTING AND REINSTALL UPON COMPLETION OF PAINTING " ALL WHITE BOARDS, MARKER BOARDS AND TACK BOARDS." CONTRACTOR TO FIGURE (4) 14"x4" BOARDS TO BE MOVED DURING THIS SCOPE OF WORK. UPON REINSTALLATIONS, CONTRACTOR IS RESPONSIBLE TO SCREW INTO EXISTING STUDS IN LIEU OF ADDING BACKING / BLOCKING. (ONLY ON SINK WALL)
- P. CONTRACTOR TO REMOVE EXISTING TILE AND MORTAR BED AT FLOOR AND REPLACE WITH NEW CEMENT BED AND TILE.
- Q. CONTRACTOR TO DRAIN, CAP OFF AND ABANDON THE ABOVE CEILING SPACE THE EXISTING FIRE SPRINKLER SYSTEM IN ROOM B06, CONTRACTOR TO DISCONNECT AND ABANDON ANY FLOW SWITCHES OR TAMPER SWITCHES AND CHECK VALVES TIED TO ALARM SYSTEM.

DEMOLITION LEGEND

SYMBOL	DESCRIPTION
	CONCRETE SLAB/PAVING TO BE REMOVED
	1 HR. FIRE RATED WALL (E)
	EXISTING WALL
	EXISTING WALL TO BE REMOVED
	2 HR. FIRE BARRIER WALL RE: C8.C. TABLE 720.1 ITEM 15-17



ARCHITECT'S STAMP
ENGINEER'S STAMP

OAK PARK UNIFIED SCHOOL DISTRICT
BROOKSIDE ELEMENTARY SCHOOL
BUILDING B/200 (BID AND CA)

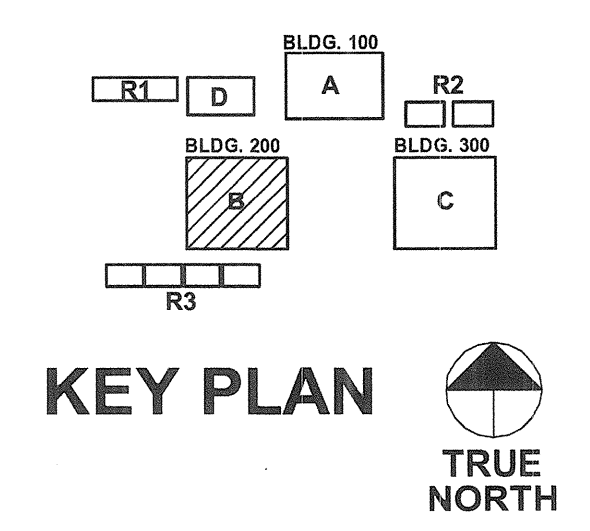
KPI Architects Inc.
650 East Parkridge Avenue, Suite 105
Corona, California 92879-1092
Phone: (951) 366-5381 Fax: (951) 493-2059

barnhart, inc.
A HERY INTERNATIONAL COMPANY

PROJECT NO. : 234808 DATE: 01-07-13

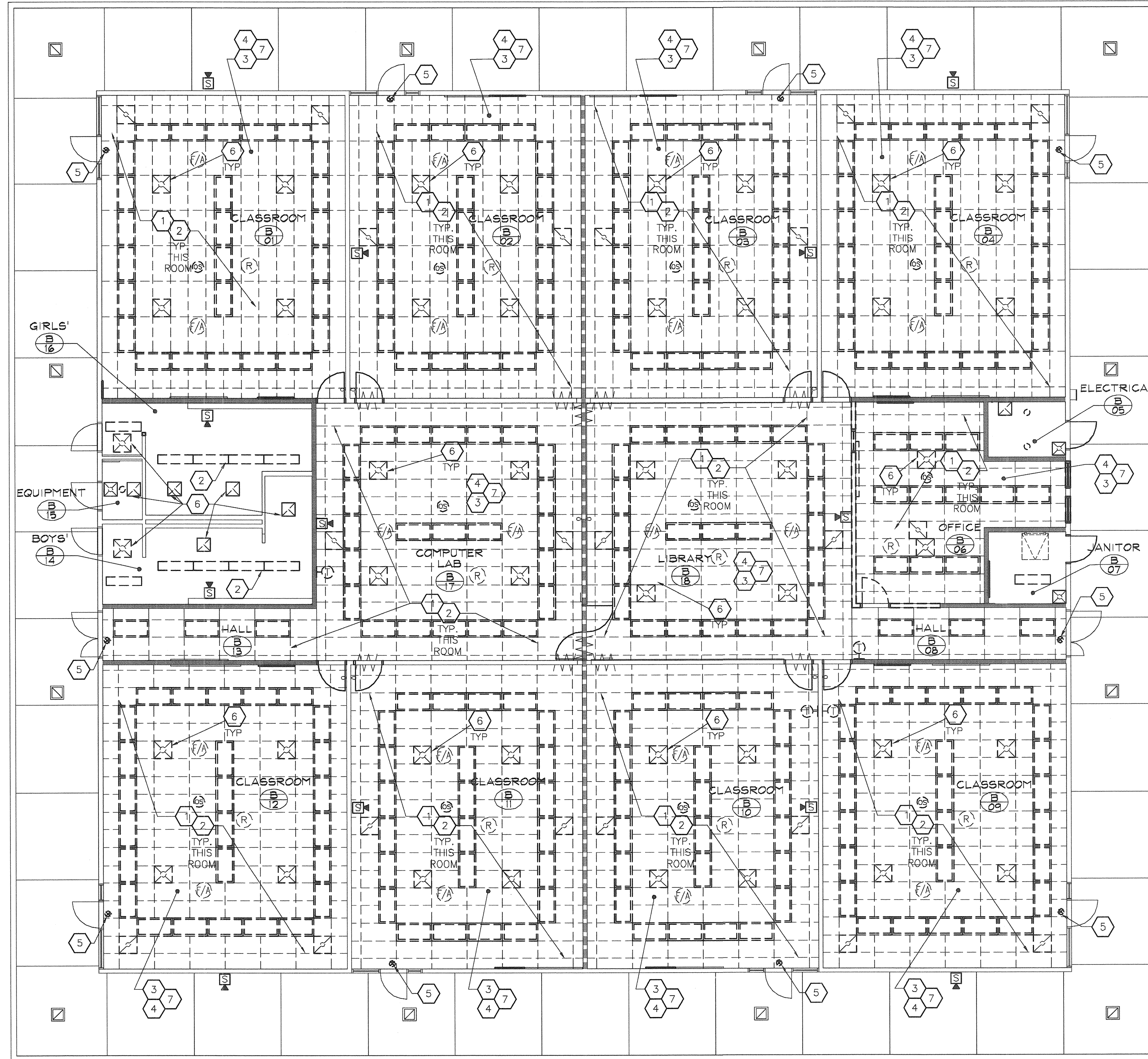
DEMOLITION FLOOR PLAN - BUILDING B

13-03R
AD1-D2.2



KEY PLAN
TRUE NORTH

IDENTIFICATION STAMP
DIV. OF THE STATE ARCHITECT
APPL 03-113415
AC: FLS SS
DATE: _____
DSA STAMP



1 DEMOLITION REFLECTED CEILING PLAN
 SCALE: 1/8" = 1'-0"



- KEYNOTES:** NOTE: NOT ALL KEYNOTES MAY BE USED ON THIS SHEET.
1. REMOVE EXISTING 2x4 ACOUSTICAL LAY-IN CEILING GRID AND TILE, INCLUDING SPLAY / HANGING WIRES AND LAG SCREWS THROUGHOUT. TYPICAL.
 2. REMOVE EXISTING LIGHT FIXTURES AND ASSOCIATED SUPPORTS THROUGHOUT BUILDING. COIL BACK WIRING FOR REUSE WITH NEW LIGHT FIXTURES.
 3. REMOVE F/A DEVICES AND RE-INSTALL AT NEW LOCATIONS IN CENTER OF ACOUSTICAL TILE.
 4. REMOVE ROUTERS, PULL BACK WIRE AND REINSTALL AT NEW LOCATIONS IN T-BAR.
 5. REMOVE EXISTING EXIT SIGNS.
 6. REMOVE ALL EXISTING SUPPLY AND RETURN AIR GRILLES AND ALL ABOVE CEILING DUCTWORK.
 7. REMOVE EXISTING OCCUPANCY SENSORS.

EXISTING CONSTRUCTION

1. ROOF : BUILT-UP ROOFING ON PLYWOOD SHEATHING (SARNAFIL COOL ROOF)
2. BEARING WALLS (EXTERIOR WALLS): WOOD STUD PLASTER FINISH
3. INTERIOR WALLS: WOOD STUD, NON-BEARING DE-MOUNTABLE PARTITIONS, AND FOLDING PANEL PARTITIONS

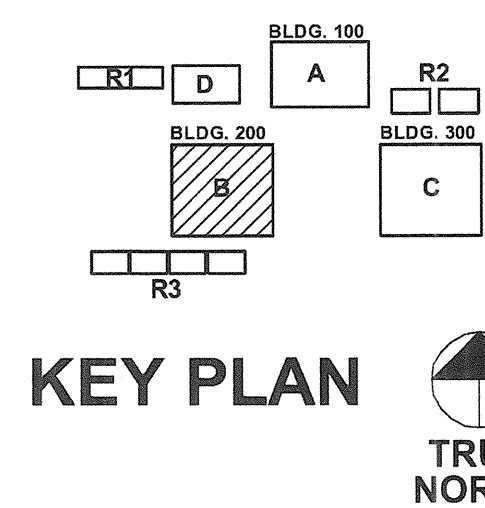
DEMOLITION REFLECTED CEILING

GENERAL SCOPE OF WORK

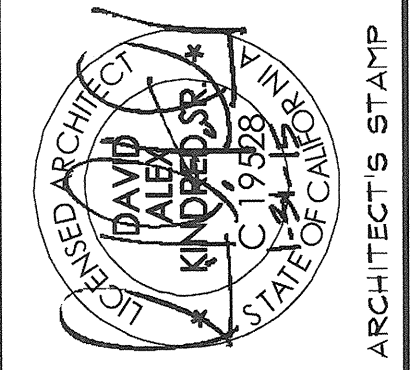
- A. REMOVE EXISTING 2x4 ACOUSTICAL LAY-IN CEILING GRID AND TILE FROM AREAS INDICATED.
- B. REMOVE EXISTING LIGHT FIXTURES IN AREAS INDICATED.
- C. SECURE, STORE ALL EXISTING MISCELLANEOUS ITEMS SUCH AS SPEAKERS, MOTION DETECTORS, SMOKE DETECTORS, ETC. FOR REINSTALLATION IN NEW CEILING.
- D. REMOVE PIPE SPRINKLERS AND CAP ABOVE CEILING.
- E. REMOVE ALL FIBERGLASS DUCTWORK AND ASSOCIATED SUPPORTS. REMOVE OVERHEAD NON-COPPER / GALVANIZED WATER PIPES AND ASSOCIATED SUPPORTS.
- F. REMOVE ALL EXISTING SPLAY WIRES / U19 EYE SCREWS / HANGER WIRES, SUPPORT FOR THE T-BAR.
- G. REPLACE 10% OVERHEAD INSULATION THROUGHOUT, WITH MINIMUM OF 10 BATTS IN EACH ROOM.

LEGEND

- ⊙ OCCUPANCY SENSOR
- ⊙ SMOKE / HEAT
- ⊙ ROUTER
- ⊙ HORN / STROBE



KEY PLAN



ARCHITECT'S STAMP

Oak Park
 UNIFIED SCHOOL DISTRICT
 BROOKSIDE ELEMENTARY SCHOOL
 BUILDING B/200 (BID AND CA)

KPI
 KPI Architects Inc.
 600 East Parkridge Avenue, Suite 105
 Corona, California 92718-1092
 Phone: (951) 366-6381 Fax: (951) 493-2059
barnhart, inc.
 A HEERY INTERNATIONAL COMPANY

PROJECT NO.: 234808 DATE: 01-07-13

DEMOLITION REFLECTED CEILING PLAN - BUILDING B

IDENTIFICATION STAMP
 DIV. OF THE STATE ARCHITECT
 APPL 03-113415
 AC: _____ FLS: _____ SS: _____
 DATE: _____
DSA STAMP

13-03R
AD1-D7.2